

SIBYC Sailing Instructions 2016-2017

All yachts taking part in Club events do so at their own risk, the Committee and the Sussex Inlet Basin Yacht Club Inc do not accept any responsibility for the sea worthiness of any yacht, or the sufficiency or adequacy of it's skipper. It shall be the sole responsibility of each yacht skipper to decide whether or not to start or to continue to race. All events run by SIBYC Inc on St Georges Basin are Category 7 under the standards of SI (Cat 7). A self-audit form available on the club website.

1. Rules and Organising Authority

The season's sailing is organised by the SIBYC and governed by the Racing Rules of Sailing (RRS) for 2013-2016, the prescriptions and special regulations of the AYF, special Regulations, Part 1 the rules of the Trailable Yacht classes and except as any of these are changed by these sailing instructions.

All yachts shall display sail numbers.

In all Midweek events personal buoyancy shall be worn at all times whilst racing, except when inside the cabin. For Weekend events the wearing of personal buoyancy at all times whilst racing except when inside the cabin is strongly recommended. It is each Skipper's responsibility to ensure the safety of the boat's crew. Auxiliary engines shall be fitted on their operating brackets whilst racing.

.

2. Eligibility and Entry

The Club events are open to yachts that have entered and paid fees. Visitors are welcome and may sail up to 3 races but will not be awarded points. Non-point score events (eg Picnic/Discover Sailing) are open to all yachts, including visitors, free of charge. Yachts intending to sail in an event shall advise the relevant Race Secretary at least 3 hours before the advertised starting time of their intention to sail (having regard to the weather and the weather forecasts for the day).

All yachts shall indicate their intention to participate in an event by reporting to the Starter advising the number of persons on board prior to the start time.

Weekend Series - A race may be abandoned unless at least 4 yachts have advised their intention to sail. Midweek Series - A race may be abandoned unless at least 3 yachts have advised their intention to sail. There is no limit to the number of yachts participating in the non-point score races.

3. Notices to Competitors

Midweek Events: Competitors will be notified by notice placed on the notice board at 44 Loralyn Avenue St Georges Basin by e-mail or by telephone. For midweek events abandoned races will not be re-sailed.

Weekend Events:

Competitors will be notified by, e-mail or the website or telephone. An abandoned race will not be re-sailed.

4. Changes in Sailing Instructions

Weekend Events: Any changes in sailing instructions prior to the start of the race may be signalled from the Race Officer/Starter Boat by displaying of Code Flag 'L'. All boats should come within hail to receive the alterations orally. These may also be transmitted on 27. 94 MHz.

Midweek Events: All changes in sailing instructions prior to the start will be advised by radio.

5. Schedule of Events

The schedule of events is set out on a separate Calendar. The type of starting is shown on the Calendar. Scheduled starting times for the various events are as follows: -

Saturday events Scheduled starting time not before 1300 hours.

Picnic/Discover Sailing events Scheduled starting time not before 1100 hours.

Midweek events Scheduled starting time not before 1300 hours

6. Sail Restrictions

Midweek Events: Spinnakers may only be flown in the Spinnaker Serie.

7. Class Flag

The Class Flag is a white flag with a black 'T'

8. Racing Area & Courses

Races will be conducted on St Georges Basin on courses as described in Appendix A and B attached. Buoy position may be varied slightly to suit prevailing wind conditions.

Weekend Basin Chase Events: Course details in Appendix A and the location of the Race Officer/Starter's boat will indicate the start line.

Weekend Inside and Outside Events: Location of the Race Officer/Starter's boat at the starting line will indicate the course to be sailed

for outside events. For inside events the starter's boat will be positioned in the centre of the course as shown in Appendix A.

The Race Committee (Race Officer & Sailing Committee) will decide the course to be sailed on the day.

Midweek Events: The course to be sailed on the day will be advised by radio.

Courses may be varied during the season by the issue of notice to competitors.

Course details refer to Appendix B. All races will start from a buoy located at the centre of the course.

9. Marks

Marks will be red or orange buoys. The starting mark will be a red or orange buoy. The finish mark will be a red or orange buoy. A small round plastic mark will be the end of the start line for gate and handicap starts.

10. Start Procedure – with Start Boat or Shore Start

Races will start in accordance with Rule 26.

For weekend events:

Warning Signal (5 minutes to start) Class flag (white flag with black 'T') & 1 sound signal

Preparatory Signal (4 minutes to start) - Flag 'P' (blue with white centre) & 1 sound signal.

Preparatory Signal (1 minute to start) - Flag 'P' removed & 1 long sound signal.

Starting - Class Flag removed & 1 sound signal.

Scratch Start - All boats will start at the start signal.

Handicap Start – Boats will start at a time equal to the start signal time plus the boat's individual handicap. Each boat's start time will include a sound signal (where possible).

The Race Officer/Starter's Boat has the ability to adjust the starting times so that the low handicap boat becomes the scratch boat and the other boats' start times are adjusted accordingly.

For midweek events:

All signals will be made ashore over the radio. No flags will be used

11. Starting Lines

Weekend Start Events (when a starting boat is available):

The starting line will be between the signal mast on the Race Officer/Starter's Boat at the starboard end and the port end mark. An inner distance mark may be laid near the Race Officer/Starter's Boat. When used, yachts shall leave this mark to starboard. A boat shall not start later than 15 minutes after her starting signal. Gate start may be used for other events and will be notified in the sailing programme or in accordance with item 4. "Changes in Sailing Instructions."

Midweek Gate Start Races (including Spinnaker/Championship Events):

The Gate Start Boat will fly code flag 'G' (blue & yellow vertical stripes) on its starboard main stay. At the start time the gate Start Boat will sail past the starting mark on Port Tack showing a hand held 'P' flag. It will sail for a maximum of 1 minute and drop a buoy which will mark the end of the starting line but the Gate Boat may tack at any time after all boats have passed the stern of it.

Midweek Handicap Start Events:

Starting line for handicap start races will be between Buoy No 5 and a small plastic buoy at the Stbd end of the line.

12. Shortened Course or Abandoning after the Start

Weekend Events:

In accordance with RRS 32.2 the Race committee may shorten course at any mark of the course. Code Flag 'S' will be displayed and 2 sound signals made. Races may be abandoned before or after the start in accordance with Rule 27.3 or 32.1(a), (b), (c), (d) or (e).

Midweek Events:

Course shortening or abandonment will be advised by radio. Refer to Appendix B course maps for instructions.

13. Recalls

Individual recall will be signalled in accordance with RRS 29. 1. An early starter may also be advised by radio. General recall will be signalled in accordance with RRS 29. 2.

Following a general recall the 'I' Flag Rule RRS 30.1 will apply.

14. Finishing line

Weekend Events: This will be between the designated buoy in the course instructions and the flagstaff of the Race Officer/Starter's Boat. If the occasion arises where there is NO Race Officer/Starter's Boat on station at the finish line then all boats must finish by passing the finish buoy on the hand designated and within three boat lengths of the buoy. The boat's crew must record its finish time and if practical, the boat time immediately in front and behind.

Midweek Events: The finishing line will be between Buoy No 3 and the flagstaff on shore.

Midweek events with start/finish boat: The finishing line will be between the designated buoy in the course and the flagstaff on the Race Officer/Starter's boat. If the occasion arises where there is no Race Officer on station at the finish line all boats must finish by passing the finish buoy on the hand designated within three boat lengths of the buoy. The boats crew must record its finish time and if practical, the boat time immediately in front and behind.

15. Time Limit

Each yacht will have 3 hours plus its PBH handicap allowance to sail the course. If it does not complete the course in this time it will be recorded as DNF.

16. Protests

All protests must be in writing.

Protest Time Limit: A protest must be handed to a Sailing Committee Member at Sussex Inlet or St Georges Basin within 2 hours of the last boat finishing. The time will be extended if no Committee Member is available. A fee of \$5.00 must be paid when the protest is lodged.

Mediation: A mediation hearing may be requested for a protest lodged in accordance with rule 61 which allege an infringement of a rule of Part 2 or 4. Such hearings will be held subsequent to the protest being lodged but do not require the \$5 fee unless a protest hearing is subsequently requested. The time and place of the mediation hearing will be decided by the mediator and such advice may be given verbally. One representative of each boat shall attend the mediation hearing and no witnesses shall be allowed. The mediator shall decide the manner in which testimony is given. After taking testimony at a mediation hearing the mediator shall make one of the following conclusions:

(a) The protest does not comply with rule 61 and the protestor may withdraw the protest.

(b) The matter shall proceed to a protest hearing. (This may be because rules other than Part 2 or 4 are or may be involved, or because evidence is too complex or divergent to reach a reasonable and timely conclusion, or due to the apparent severity of the alleged infringement, or for any other reason decided by the mediator.)

(c) No rule was broken and the protestor may withdraw the protest.

(d) A rule was broken by one or more of the boats involved, the infringing boat(s) may accept a 20% scoring penalty and if so accepted the protestor shall withdraw the protest. (Part points shall be rounded up and the points of other boats shall not be adjusted.)

A mediation hearing shall not be re-opened. No conclusion of a mediator shall be subject to appeal or be grounds for redress. Should the protest proceed to a protest hearing then the mediator may be a member of the Protest Committee. Any evidence given by a mediator during a protest hearing shall be given only in the presence of the parties to the hearing.

17. Radio Communication

A boat shall neither make radio transmissions while racing nor receive radio communications not available to all boats. (Radio transmissions on frequencies listed in the notice of race are deemed to be available to all boats). This also applies to the use of mobile phones. See page three for radio frequencies used.

18. Environmental Rule

Yachts shall not dispose of any item on board the boat into St Georges Basin.

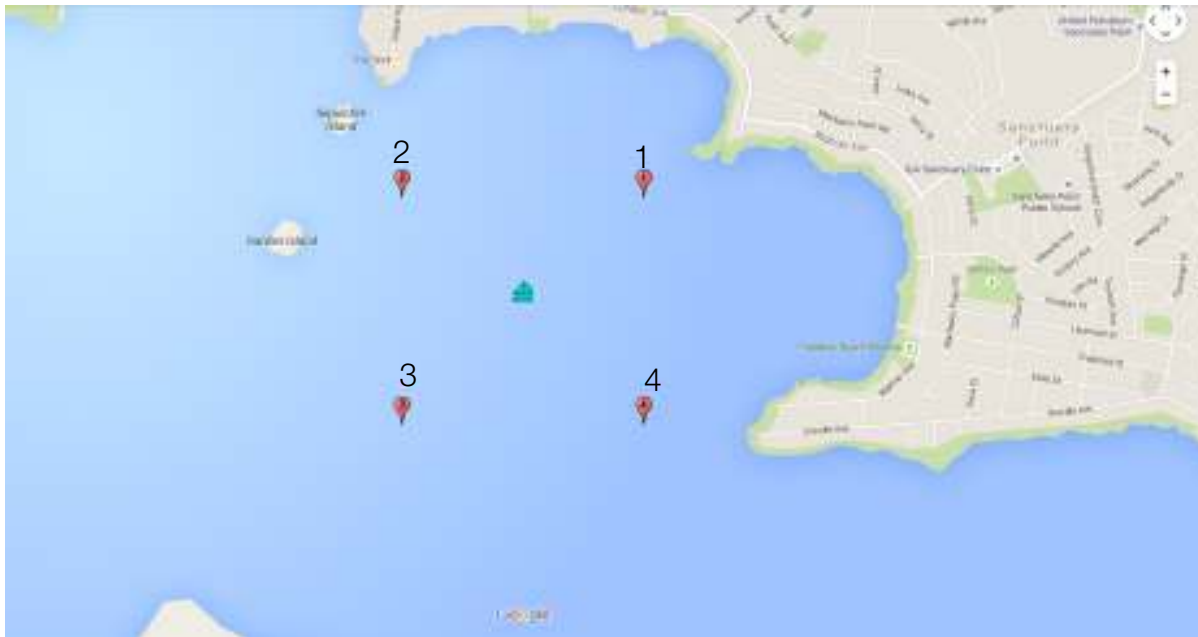
19. Wind Speed

Should the wind speed be determined to gust 20 knots or more for Midweek events and 25 knots or more for Weekend events during the hour prior to the warning signal the event may, at the discretion of the sailing committee, be either postponed or abandoned by the Sailing Committee/Race Officer. Also if there is less than 3 knots of wind prior to the warning signal the start may, at the discretion of the Sailing Committee, **the race may be** delayed, postponed or the race abandoned by the Race Officer /Sailing Committee.

Appendix A

Weekend Inside Course

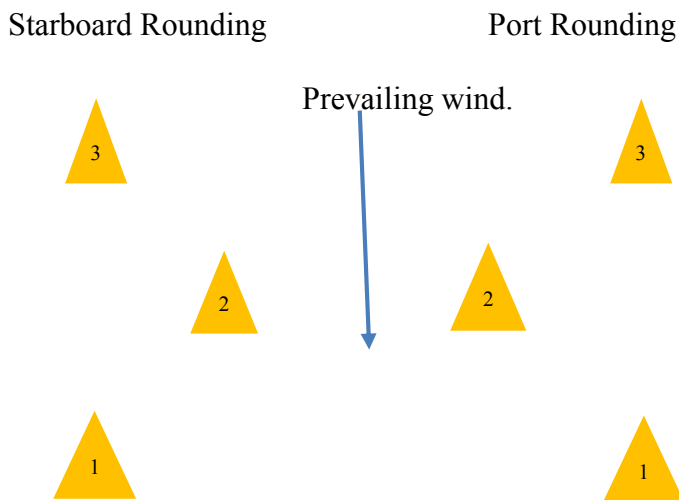
2015-2016 Inside Course. Four fixed position laid marks, course based on wind direction.																	
Course No.	Wind Direction	Start	Mark rounding. S = Leave mark to starboard, P = Leave mark to port. Start/Finish will be between committee boat and laid mark in centre of course.													Finish	
1	N	Committee Boat	2P	4P	1P	3S	2S	3S	2S	4P	1P	3S	2S	3S	2S	Committee Boat	
2	NE	Committee Boat	1P	2P	3P	1S	4S	3S	1P	3P	1P	2P	3P	1S	4S	3S	Committee Boat
3	E	Committee Boat	1P	3P	4P	2S	1S	2S	1S	3P	4P	2S	1S	2S	1S	Committee Boat	
4	SE	Committee Boat	4P	1P	2P	4S	3S	2S	4P	2P	4P	1P	2P	4S	3S	2S	Committee Boat
5	S	Committee Boat	4P	2P	3P	1S	4S	1S	4S	2P	3P	1S	4S	1S	4S	Committee Boat	
6	SW	Committee Boat	3P	4P	1P	3S	2S	1S	3P	1P	3P	4P	1P	3S	2S	1S	Committee Boat
7	W	Committee Boat	3P	1P	2P	4S	3S	4S	3S	1P	2P	4S	3S	4S	3S	Committee Boat	
8	NW	Committee Boat	2P	3P	4P	2S	1S	4S	2P	4P	2P	3P	4P	2S	1S	4S	Committee Boat
Notes:		Course may be shortened at any mark. Finish between committee boat and mark in continuous direction from previous mark. (i.e. you do not have to round finish mark to finish). Shortened Course will be indicated by "S" Flag on committee boat.															



Mark 1	35° 6' 21.9" S	150° 36' 30.5" E
Mark 2	35° 6' 21.9" S	150° 35' 47.4" E
Mark 3	35° 6' 55.0" S	150° 35' 47.4" E
Mark 4	35° 6' 55.0" S	150° 36' 30.5" E

Weekend Outside Course:

Standard Triangle-Sausage-Triangle. With either port or starboard rounding's. Rounding to be displayed by flag on committee boat (Green = Starboard, Red = Port). Start from bottom (leeward) mark, finish at top (windward) mark. Start and finish between Committee boat and laid mark of course. Course may be shortened at any mark of the course. Finish between committee boat and mark travelling in direction from last mark. (i.e. you do not have to round the finish mark). Course to be sailed in the general area indicated below according to prevailing wind. Marks to be laid according to the prevailing wind at approximately the positions given in the table below.



Course	Start									Finish
Starboard	1	3S	2S	1S	3S	1S	3S	2S	1S	3
Port	1	3P	2P	1P	3P	1P	3P	2P	1P	3

General Area of Sailing

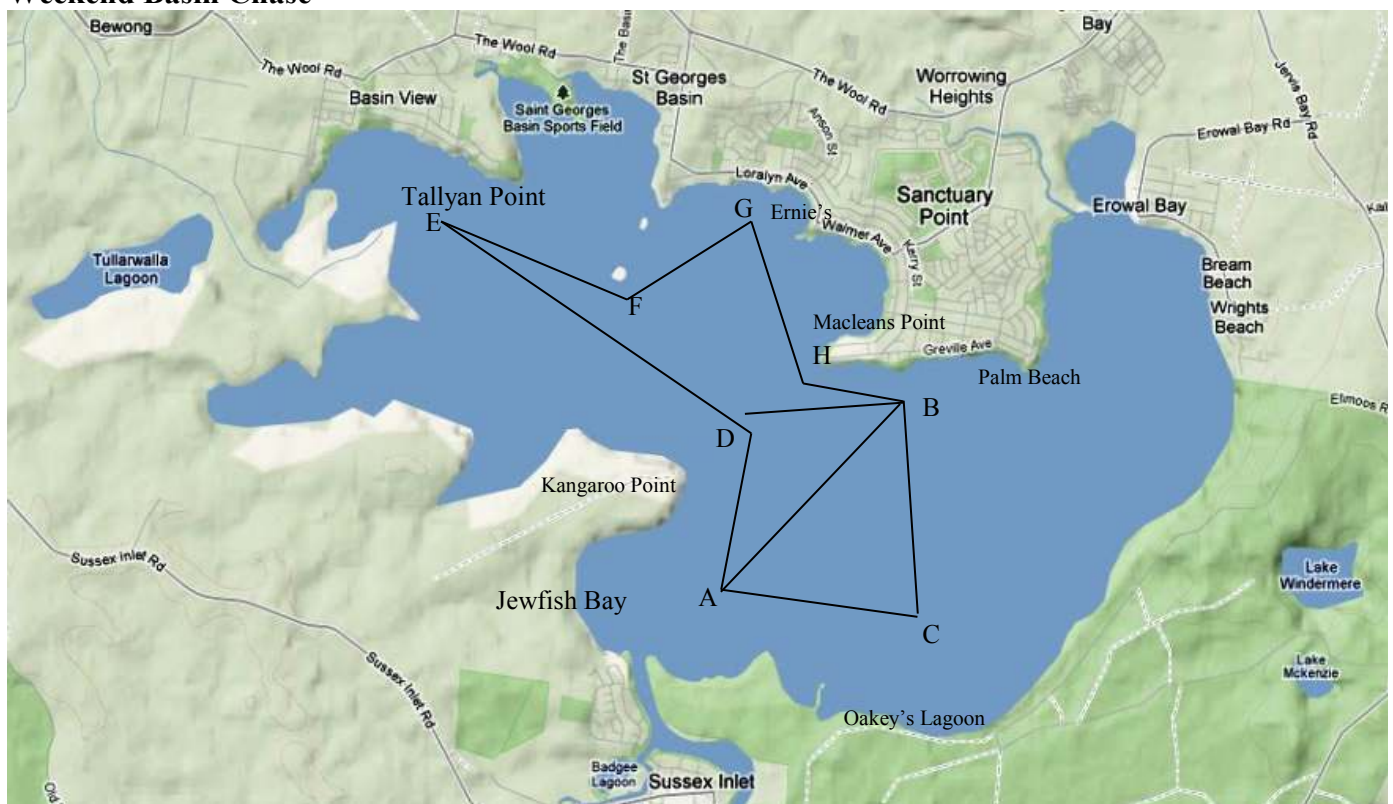


Position of Marks – Outside Course:

Wind Direction	Start	Mark 1/3	Mark 2 (Wing)	Mark 3/1	Finish
N/S	35° 8' 23.1" S 150° 36' 15.9" E	35° 8' 23.1" S 150° 36' 15.9" E	35° 7' 50.5" S 150° 36' 56.2" E	35° 7' 17.9" S 150° 36' 15.9" E	35° 7' 17.9" S 150° 36' 15.9" E
NNE/SSW	35° 8' 25.3" S 150° 36' 23.5" E	35° 8' 25.3" S 150° 36' 23.5" E	35° 8' 9.1" S 150° 37' 14.4" E	35° 7' 26.5" S 150° 36' 53.6" E	35° 7' 26.5" S 150° 36' 53.6" E
NE/SW	35° 7' 29.7" S 150° 37' 15.9" E	35° 7' 29.7" S 150° 37' 15.9" E	35° 8' 17.0" S 150° 37' 15.9" E	35° 8' 17.0" S 150° 36' 16.0" E	35° 8' 17.0" S 150° 36' 16.0" E
ENE/WSW	35° 7' 37.3" S 150° 37' 45.3" E	35° 7' 37.3" S 150° 37' 45.3" E	35° 8' 16.9" S 150° 37' 17.5" E	35° 7' 50.1" S 150° 36' 26.7" E	35° 7' 50.1" S 150° 36' 26.7" E
E/W	35° 7' 52.4" S 150° 37' 38.8" E	35° 7' 52.4" S 150° 37' 38.8" E	35° 8' 11.3" S 150° 37' 13.0" E	35° 7' 52.4" S 150° 36' 31.6" E	35° 7' 52.4" S 150° 36' 31.6" E
ESE/WNW	35° 7' 59.2" S 150° 38' 0" E	35° 7' 59.2" S 150° 38' 0" E	35° 8' 21.0" S 150° 37' 7.1" E	35° 7' 31.8" S 150° 36' 42.1" E	35° 7' 31.8" S 150° 36' 42.1" E
SE/NW	35° 7' 30.5" S 150° 37' 22.2" E	35° 7' 30.5" S 150° 37' 22.2" E	35° 8' 17.1" S 150° 37' 22.2" E	35° 7' 30.5" S 150° 37' 30.1" E	35° 7' 30.5" S 150° 37' 30.1" E
SSE/NNW	35° 8' 22.4" S 150° 36' 36.8" E	35° 8' 22.4" S 150° 36' 36.8" E	35° 7' 39.8" S 150° 37' 0" E	35° 7' 21.2" S 150° 36' 7.3" E	35° 7' 21.2" S 150° 36' 7.3" E

Note: Marks 1 and 3 transpose as indicated depending on prevailing wind.

Weekend Basin Chase



- A – Laid mark, in the vicinity of Jewfish Bay.
- B – Laid mark, in the vicinity between Macleans Point and Palm Beach
- C – Laid mark, in the vicinity of Oakey Lagoon
- D – Laid mark in the vicinity between Kangaroo Point and Maclean's Point.
- E – Laid Mark in the vicinity of Tallyan point.
- F – Cardinal Mark off Garden Island.
- G – Laid Mark in the Vicinity of Ernie's
- H – Cardinal Mark off Macleans Point.

Passage race starting at D and Finishing at I for all wind directions.

Course (All marks starboard rounding unless indicated – p)

Start at D then A (p), B, C, A, D(p), E, F(p), G, H(p), B, Finish at D.

SIBYC Thursday Race Courses 2016-2017 (v5 25-09-16)

Wind Direction	Start	ALL RACES Marks (refer to map)																Finish	FULL COURSE
		Marks (refer to map)																	
NE	1P	2P	3P	4P	2S	5S	4S	2P	4P	2P	3P	4P	2S	5S	4S	1P	3P	8.9	
SE	1P	5P	2P	3P	5S	4S	3S	5P	3P	5P	2P	3P	5S	4S	3S	1P	3P	8.9	
SW	1P	4P	5P	2P	4S	3S	2S	4P	2P	4P	5P	2P	4S	3S	2S	1S	3P	8.9	
NW	1P	3P	4P	5P	3S	2S	5S	3P	5P	3P	4P	5P	3S	2S	5S		3P	8.9	
N	1P	3P	5P	2P	5P	2P	4S	3S	4S	3S	5P	2P	5P	2P	4S		3P	8.7	
E	1P	2P	4P	5P	4P	5P	3S	2S	4P	5P	3S	2S	4P	5P	1S	2P	3P	8.7	
S	1P	5P	3P	4P	3P	4P	2S	5S	3P	4P	3P	4P	2S	5S			3P	8.6	
W	1P	3S	5S	4S	5S	4S	2P	3P	5S	4S	2P	3P	5S	4S	2P		3P	8.3	
Short Course		Delete buoys marked with pink background (<i>ITALIC text</i>)																	
Super Short Course		Delete buoys marked with pink and yellow background (<i>ITALIC & BOLD text</i>)																	
NOTES		Shorten course decisions will be called over the radio.																	
		BASE - 44 Lorallyn Ave St Georges Basin - t: 4443 2333 - Andrew: 0408 977 790 Lorallyn Ave is narrow and dangerous, so we recommend parking in the quiet section as marked on the map and walking back.																	

