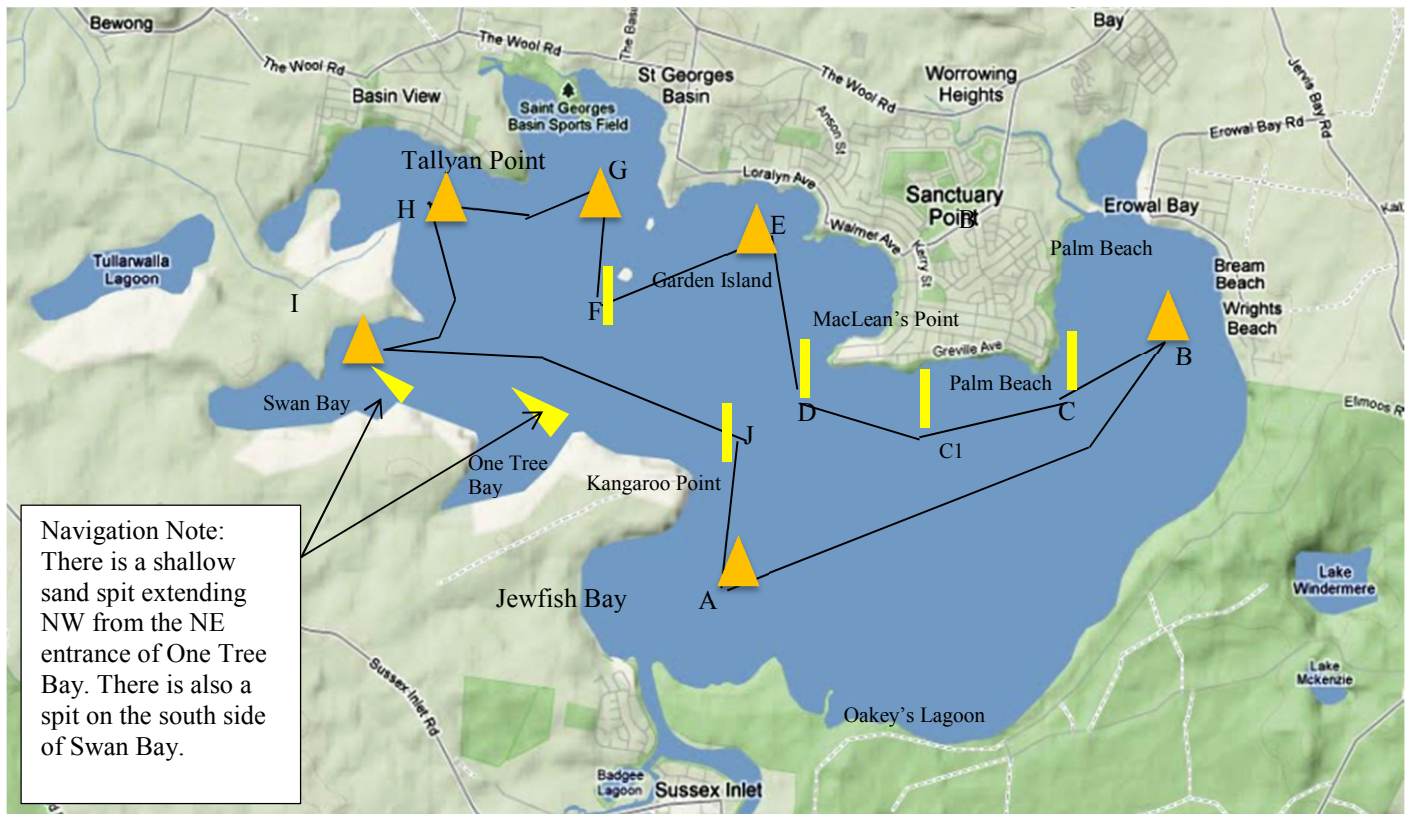


Basin Classic 2018



- A – Start/Finish, in the vicinity of Jewfish Bay. 35°08'16.7"S 150°3'50.5"E
- B – Laid mark, in the vicinity of Erowal Bay (Wrights Beach) 35°06'59.3"S 150°38'57.9"E
- C – Cardinal Mark off Palm Beach
- C1 – Cardinal Mark between Palm Beach and Macleans Point.
- D – Cardinal Mark off Macleans Point.
- E – Laid Mark, in the vicinity of "Ernies" 35°06'12.7S 150°36'11.4"E
- F – Cardinal Mark of Garden Island
- G – Laid Mark off Tallyan Point in the vicinity of Home Bay 35°05'54.1"S 150°35'11.7"E
- H – Laid mark off Basin View. 35°05'58.6"S 150°34'22.5"E
- I – Laid mark in vicinity of Swan Bay. 35°06'56.3"S 150°33'43.2"E
- J – Cardinal Mark off Kangaroo Point.

Passage race starting and finishing at A. The start/finish line will be between the Committee boat and the laid mark A. All laid mark GPS positions are approximate and for reference only.

Course 1 – Clockwise (Red Flag on Committee Boat)

Start A, J(p),I(s),H(s),G(s),F(p),E(s),D(p),C(p),B(s) Finish A

Course 2 – Anti-clockwise (Green Flag on Committee Boat)

Start A, B(p),C(s),D(s),E(p),F(s),G(p),H(p),I(p),J(s) Finish A

Once a race has started the marks of the course will not be moved.

The course may be shortened at any mark of the course. Finish between Mark and committee boat in direction of travel from previous mark (i.e. you do not have to round mark to finish)