



# Sussex Inlet & Basin Yacht Club Inc.

## Notice of Season's Events & Sailing Instructions 2018/2019

### **COMMITTEE**

Commodore	Paul Torney	0419 278 103
Vice Commodore	Lynne Arnold	0408 241 130
Rear Commodore	Steve Miller	0244 460 557
Secretary	Lynne Kirkpatrick	0413 617 083
Treasurer	Louisa Fitzgerald	0409 058 158
Committee Members	Andrew Bonnette	0408 977 790
	Andrew Fitzgerald	0402 907 607
Trustees	Greg Arnold	0412 927 937
	Greg Brown	0422 025 037
Public Officer	Greg Brown	0422 025 037

### **SAILING COMMITTEE**

#### **Weekend**

Greg Brown	0422 025 037
Phil Queripel	0418 615 137
Andrew Fitzgerald	0402 907 607
Greg Arnold	0412 927 937

#### **Midweek**

Andrew Bonnette	0408 977 790
Greg Brown	0422 025 037
Dick Finlayson	02 4443 0413

#### **Handicappers/Race Secretaries**

Andrew Fitzgerald 0402 907 607

#### **Publicity Officer**

Greg Brown 0422 025 037

#### **Handicappers/Race Secretaries**

Tim Finlayson 02 4443 0413  
Gwen Smith

The Sussex Inlet-Basin Yacht Club Inc. invites entries from Trailable Yachts, Ballasted Day Sailors and Trailable Multi Hulls for the 2018-2019 season of events to be conducted on St. Georges Basin.

**Rules:** The races will be governed by the *ISAF Racing Rules of sailing 2017-2020* and the Prescriptions and Special Regulations of the AYF.

**Eligibility:** All yachts owned by financial members of S.I.B.Y.C. who have paid race entry fees and hold current third party liability insurance of at least \$5 million and YA membership for themselves & participating crew, will be eligible to compete and will gain points in the various Series.

**Visitors** (Not existing members) are welcome and may sail up to 3 races but will not be awarded points. All visitors must have public liability insurance. Visitors wishing to sail more than three races are invited to join the club.

**Entries & Fees:** To enter, yacht owners must complete the membership/entry form and pay the prescribed fees for the season by the 30<sup>th</sup> October 2018.

**No points will be awarded to boats that are un-financial after 30<sup>th</sup> October 2018. Points will not be awarded retrospectively for races already sailed once a boat becomes financial.**

All entrants agree to be bound by the racing rules of the ISAF and by all other rules that govern the events and:

“The decision to race places the sole responsibility for deciding whether or not to start or to continue racing on the yacht skipper”

The Committee reserves the right to refuse any entry and need not give any reason for doing so.

**Radio Frequencies:** 27.94 MHz Club Events  
27.88 MHz Primary distress & calling only  
VHF Ch 72 (may also be used as a transition to VHF)

**Measurements:** Yachts may be measured and or safety equipment inspections may be conducted at the discretion of the Sailing Committees.

**Scoring:** The low point system will apply.  
Boats which opt to sail in a 7 race series will be scored as an entrant for that series.  
Boats which opt to sail 9 randomly selected races over the season will not be scored as an entrant in any series but will be eligible for daily prizes

**Program:** See Race Calendar ([www.sibyc.com.au/calendar](http://www.sibyc.com.au/calendar))

## WEEKEND EVENTS SUMMARY

<b>Basin Chase Series</b>	7 races (mixed handicap and scratch) 5 to count based on PBH results.
<b>Outside Series</b>	7 races (mixed handicap and scratch) 5 to count based on PBH results.
<b>Inside Series</b>	7 races (mixed handicap and scratch) 5 to count based on PBH results.
<b>Weekend Club Champion</b>	5 races from each series to count based on PBH results.
<b>American's Cup Trophy</b>	9 races to count from the 11 scratch starts based on CBH results.

## MIDWEEK EVENTS SUMMARY

<b>Handicap Start Series</b>	9 races programmed 5 races to count based on PBH results.
<b>Gate Start Series</b>	9 races programmed 5 to count based on PBH results
<b>Spinnaker Series (Championship)</b>	9 races programmed 5 to count based on PBH results and CBH results.
<b>Midweek Point Score Trophy</b>	- 5 races from each of the 3 series to count based on PBH results.
<b>Midweek Club Championship</b>	- 5 races from the championship series to count based on CBH results

**Abandoned races will not be rescheduled.** If 6 or 7 races are completed in a series, best 5 will be scored. If 5 races are completed, best 4 will be scored. If less than 4 races are completed all races will score. One completed race will constitute a series.

**Trophies:** Trophies will be awarded to the successful boats in the above-mentioned events.  
The American's Cup" will be awarded to the weekend CBH Champion (scratch starts).  
A prize will be awarded to the winner in each race of the above mentioned events based on PBH results. Boats entered in random series will be eligible for daily prizes but will not be included in series points score.

**Duty Boat:** A boat, which is entered in a series of races and is rostered to act as the Race Officer/Starter's Committee boat for any race in the series shall be awarded points for equal 4<sup>th</sup> place in that race.

For mid week gate start series, the 4<sup>th</sup> (or nearest to 4<sup>th</sup>) place boat on PBH in the previous race will be the gate boat if available, or as determined by the race committee.

**Handicaps:** The time correction factor of handicapping will be used for the **Weekend Series**

The rating system of handicapping will be used for the **Mid-Week Series**  
The following adjustments will apply:

Place	1 <sup>st</sup>	2 <sup>nd</sup>	3 <sup>rd</sup>	3 <sup>rd</sup> last	2 <sup>nd</sup> last	last
Adj	0.015	0.01	0.005	-0.005	-0.01	-0.015

NOTE If there are 5 or less finishers in a race, a boat may be given both +ve and -ve handicap adjustment.

Both Weekend and Midweek series handicaps and start times will be determined by the Sailing Committee based on the performance of the previous seasons racing. A boat new to the club will have its PBH determined by the Sailing Committee and, after the first completed race, its handicap will be adjusted manually or automatically based on performance.

The owner of a boat that has been modified since its last race with the Club must advise the Sailing Committee of the modifications made. The Committee will then decide if there should be any change to its handicap.

During the season a skipper may apply to the Sailing Committee in writing for a review of the boat's handicap based on its performance. The Sailing Committee itself may review and manually adjust handicaps based on a boat's performance. The Handicapper may review all personal handicaps at regular intervals during the season and may take into account the number of boats in the various events and adjust handicaps for any drift of fleet handicaps and recommend any changes to the Sailing Committee. Objection in writing should be addressed to the Sailing Committee for adjudication.

Any modification proposed to be made to a boat's rig or hull or sails during the season must be submitted to the Sailing Committee in advance of the modified boat being sailed in any Club event so that the boat's handicap may be reviewed.

The Timpenny non spinnaker CBH is - 0.675 for club events

**For the midweek Series there will be a two handicaps for:**

- (1) Gate Start Series and Handicap start Series
- (2) Spinnaker Series (Championship) (a CBH result will also be calculated) a

**For Weekend Series there will be a separate handicap for each of the 3 Series**

**Race Day**  
**Socials:**

Post race analysis BYO refreshments and camaraderie midweek at Andrew Bonnette's at 44 Loralyn Ave and generally on Saturdays the gathering is at Sussex Inlet RSL Club.

One post-race BBQs will be added to the weekend program. Venue is Andrew & Jane Bonnette's 44 Loralyn Ave St Georges Basin. Further details will be provided closer to the date.

Weekend campouts are also held on an ad hoc basis in around the basin. Activities include BBQs sports and fishing comps. Contact Greg Arnold or Greg Brown for further details.

# Sailing Instructions 2018-2019

All yachts taking part in Club events do so at their own risk, the Committee and the Sussex Inlet Basin Yacht Club Inc do not accept any responsibility for the seaworthiness of any yacht, or the sufficiency or adequacy of its skipper. It shall be the sole responsibility of each yacht skipper to decide whether or not to start or to continue to race. All events run by SIBYC Inc on St Georges Basin are Category 7 under the standards of SI (Cat 7). A self-audit form is available on the club website.

## 1. Rules and Organising Authority

The season's sailing is organised by the SIBYC and governed by the Racing Rules of Sailing (RRS) for 2017-2020, the prescriptions and special regulations of the AYF, special Regulations, Part 1 the rules of the Trailable Yacht classes and except as any of these are changed by these sailing instructions.

All yachts shall display sail numbers.

In all Midweek events personal buoyancy shall be worn at all times whilst racing, except when inside the cabin. For Weekend events the wearing of personal buoyancy at all times whilst racing except when inside the cabin is strongly recommended. It is each Skipper's responsibility to ensure the safety of the boat's crew. Auxiliary engines shall be fitted on their operating brackets whilst racing.

## 2. Eligibility and Entry

The Club events are open to yachts that have entered and paid fees. Visitors are welcome and may sail up to 3 races but will not be awarded points. Non-point score events (eg Picnic/Discover Sailing) are open to all yachts, including visitors, free of charge. Yachts intending to sail in an event shall advise the relevant Race Secretary at least 3 hours before the advertised starting time of their intention to sail (having regard to the weather and the weather forecasts for the day).

All yachts shall indicate their intention to participate in an event by reporting to the Starter advising the number of persons on board prior to the start time.

**Weekend Series** - A race may be abandoned unless at least 4 yachts have advised their intention to sail.

**Midweek Series** - A race may be abandoned unless at least 3 yachts have advised their intention to sail.

There is no limit to the number of yachts participating in the non-point score races.

## 3. Notices to Competitors

**Midweek Events:** Competitors will be notified by e-mail or by telephone or text message or by radio prior to the race start. For midweek events abandoned races will not be re-sailed.

**Weekend Events:** Competitors will be notified by e-mail, the website or SMS. An abandoned race will not be re-sailed.

## 4. Changes in Sailing Instructions

**Weekend Events:** Any changes in sailing instructions prior to the start of the race may be signalled from the Race Officer/Starter Boat by displaying of Code Flag 'L'. All boats should come within hail to receive the alterations verbally. These may also be transmitted on 27.94 MHz.

**Midweek Events:** All changes in sailing instructions prior to the start will be advised by radio.

## 5. Schedule of Events

The schedule of events is set out on a separate Calendar. The type of starting is shown on the Calendar. Scheduled starting times for the various events are as follows: -

**Weekend Events:** Scheduled starting time is not before 1300 hours. Competitors wishing to race must indicate their intention to race by 1000 hours on the day of the race. Call or text Andy Fitzgerald on 0402 907607.

**Midweek Gate Start, Spinnaker and Handicap Series:** Scheduled starting time is not before 1300 hours. Competitors wishing to race must indicate their intention to race by 1000 hours on the day of the race. Call or text Andrew Bonnette 0408 977 790 (or when Andrew is not available, Greg Brown 0422 025 037).

## 6. Sail Restrictions

**Midweek Events:** Spinnakers may only be flown in the Spinnaker Series.

## 7. Class Flag

The Class Flag is a white flag with a black 'T'

## 8. Racing Area & Courses

Races will be conducted on St Georges Basin on courses as described in Appendix A and B attached. Buoy position may be varied slightly to suit prevailing wind conditions.

**Weekend Basin Chase Events:** Course details in Appendix A and the location of the Race Officer/Starter's boat will indicate the start line.

**Weekend Inside and Outside Events:** Location of the Race Officer/Starter's boat at the starting line will indicate the course to be sailed for outside events. For inside events the starter's boat will be positioned in the centre of the course as shown in Appendix A. The Race Committee (Race Officer & Sailing Committee) will decide the course to be sailed on the day.

**Midweek Events:** The course to be sailed on the day will be advised by radio. Courses may be varied during the season by the issue of notice to competitors. Course details refer to Appendix A.

## 9. Marks

Marks will be red or orange buoys. The starting mark will be a red or orange buoy. The finish mark will be a red or orange buoy.

## 10. Start Procedure – with Start Boat or Shore Start

Races will start in accordance with Rule 26.

### **Weekend events:**

Warning Signal (5 minutes to start) Class flag (white flag with black 'T') & 1 sound signal  
Preparatory Signal (4 minutes to start) - Flag 'P' (blue with white centre) & 1 sound signal.

Preparatory Signal (1 minute to start) - Flag 'P' removed & 1 long sound signal.

Starting - Class Flag removed & 1 sound signal.

**Scratch Start** - All boats will start at the start signal.

**Handicap Start** – Boats will start at a time equal to the start signal time plus the boat's individual handicap. Each boat's start time will include a sound signal (where possible). The Race Officer/Starter's Boat has the ability to adjust the starting times so that the low handicap boat becomes the scratch boat and the other boats' start times are adjusted accordingly.

### **Midweek events:**

All signals will be made over the radio. No flags will be used.  
Refer to Starting Lines section for procedures.

## **11. Starting Lines**

### ***Weekend Start Events:***

The starting line will be between the signal mast on the Race Officer/Starter's Boat at the starboard end and the port end mark. An inner distance mark may be laid near the Race Officer/Starter's Boat. When used, yachts shall leave this mark to starboard. A boat shall not start later than 15 minutes after her starting signal. Gate start may be used for other events and will be notified in the sailing programme or in accordance with item 4. "Changes in Sailing Instructions."

### ***Midweek Gate Start Races (including Spinnaker/Championship):***

Races will start from a buoy as indicated on the course map. The Gate Start Boat may fly code flag 'G' (blue & yellow vertical stripes) on its starboard main stay. At the start time the gate Start Boat will sail past the starting mark on Port Tack showing a hand held flag (may be 'P'). It will sail continue on port tack for a maximum of 1 minute but the Gate Boat may tack at any time after all boats have passed the stern of it. A start buoy may be laid indicating the end of the start line.

### ***Midweek Handicap Start Events:***

The start will be at buoy as indicated on the course map. Boats must pass the mark to PORT within 3 boat lengths of the mark, in the direction towards the windward mark of the course, at the boats allocated start time or as soon as possible after.

## **12. Shortened Course or Abandoning after the Start**

### ***Weekend Events:***

In accordance with RRS 32.2 the Race committee may shorten course at any mark of the course. Code Flag 'S' will be displayed and 2 sound signals made. Races may be abandoned before or after the start in accordance with Rule 27.3 or 32.1(a), (b), (c), (d) or (e).

### ***Midweek Events:***

Course shortening or abandonment will be advised by radio. Refer to Appendix A course maps for instructions.

## **13. Recalls**

Individual recall will be signalled in accordance with RRS 29. 1. An early starter may also be advised by radio. General recall will be signalled in accordance with RRS 29. 2. Following a general recall the 'I' Flag Rule RRS 30.1 will apply.

## **14. Finishing line**

***Weekend Events:*** This will be between the designated buoy in the course instructions and the flagstaff of the Race Officer/Starter's Boat. If the occasion arises where there is NO Race Officer/Starter's Boat on station at the finish line then all boats must finish by passing the finish buoy on the hand designated and within three boat lengths of the buoy. The boat's crew must record its finish time and if practical, the boat time immediately in front and behind.

***Midweek Events (no official on station):*** Boats are to note their own finishing time or elapsed time from the nominated start time (based on GPS or cell phone time to the nearest second). Boats shall pass the finishing mark on the side indicated on the course map and within 3 boat lengths of the mark.

## **15. Time Limit**

Each yacht will have 3 hours plus its PBH handicap allowance to sail the course. If it does not complete the course in this time it will be recorded as DNF.

## **16. Protests**

All protests must be in writing.

**Protest Time Limit:** A protest must be handed or emailed to a Sailing Committee Member at Sussex Inlet or St Georges Basin within 2 hours of the last boat finishing. If emailed then notification must also be made either in person or by phone to a Race committee member. The time will be extended if no Committee Member is available. A fee of \$5.00 must be paid when the protest is lodged.

**Mediation:** A mediation hearing may be requested for a protest lodged in accordance with rule 61 which allege an infringement of a rule of Part 2 or 4. Such hearings will be held subsequent to the protest being lodged but do not require the \$5 fee unless a protest hearing is subsequently requested. The time and place of the mediation hearing will be decided by the mediator and such advice may be given verbally. One representative of each boat shall attend the mediation hearing and no witnesses shall be allowed. The mediator shall decide the manner in which testimony is given. After taking testimony at a mediation hearing the mediator shall make one of the following conclusions:

- (a) The protest does not comply with rule 61 and the protestor may withdraw the protest.
  - (b) The matter shall proceed to a protest hearing. (This may be because rules other than Part 2 or 4 are or may be involved, or because evidence is too complex or divergent to reach a reasonable and timely conclusion, or due to the apparent severity of the alleged infringement, or for any other reason decided by the mediator.)
  - (c) No rule was broken and the protestor may withdraw the protest.
  - (d) A rule was broken by one or more of the boats involved, the infringing boat(s) may accept a 20% scoring penalty and if so accepted the protestor shall withdraw the protest. (Part points shall be rounded up and the points of other boats shall not be adjusted.)
- A mediation hearing shall not be re-opened. No conclusion of a mediator shall be subject to appeal or be grounds for redress. Should the protest proceed to a protest hearing then the mediator may be a member of the Protest Committee. Any evidence given by a mediator during a protest hearing shall be given only in the presence of the parties to the hearing.

## **17. Radio Communication**

A boat shall neither make radio transmissions while racing nor receive radio communications not available to all boats. (Radio transmissions on frequencies listed in the notice of race are deemed to be available to all boats). This also applies to the use of mobile phones. See page three for radio frequencies used.

## **18. Environmental Rule**

Yachts shall not dispose of any item on board the boat into St Georges Basin.

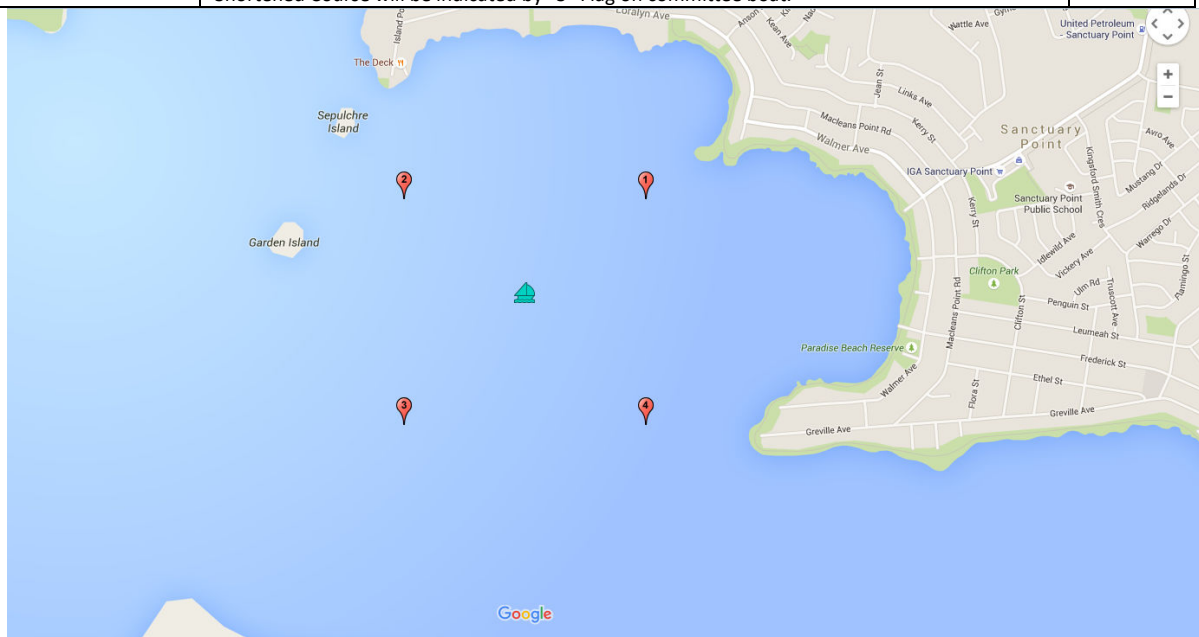
## **19. Wind Speed**

Should the wind speed be determined to gust 20 knots or more for Midweek events and 25 knots or more for Weekend events during the hour prior to the warning signal the event may, at the discretion of the sailing committee, be either postponed or abandoned by the Sailing Committee/Race Officer. Also if there is less than 3 knots of wind prior to the warning signal the start may, at the discretion of the Sailing Committee, the race may be delayed, postponed or the race abandoned by the Race Officer /Sailing Committee.

# Appendix A

## Weekend Inside Course

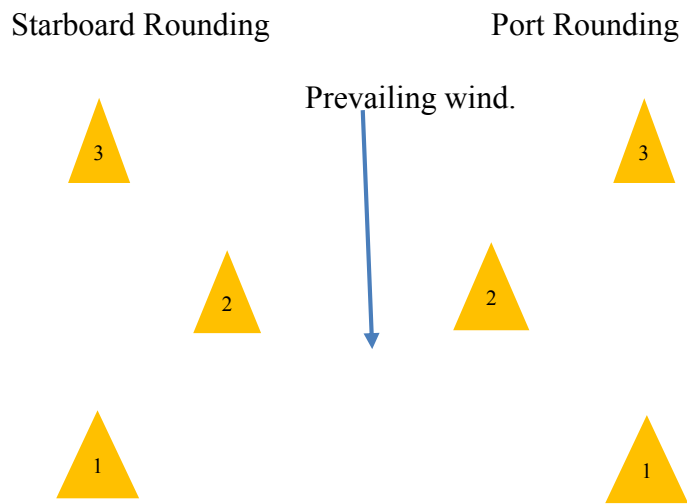
2015-2016 Inside Course. Four fixed position laid marks, course based on wind direction.																	
Course No.	Wind Direction	Start	Mark rounding. S = Leave mark to starboard, P = Leave mark to port. Start/Finish will be between committee boat and laid mark in centre of course.														Finish
1	N	Committee Boat	2P	4P	1P	3S	2S	3S	2S	4P	1P	3S	2S	3S	2S		Committee Boat
2	NE	Committee Boat	1P	2P	3P	1S	4S	3S	1P	3P	1P	2P	3P	1S	4S	3S	Committee Boat
3	E	Committee Boat	1P	3P	4P	2S	1S	2S	1S	3P	4P	2S	1S	2S	1S		Committee Boat
4	SE	Committee Boat	4P	1P	2P	4S	3S	2S	4P	2P	4P	1P	2P	4S	3S	2S	Committee Boat
5	S	Committee Boat	4P	2P	3P	1S	4S	1S	4S	2P	3P	1S	4S	1S	4S		Committee Boat
6	SW	Committee Boat	3P	4P	1P	3S	2S	1S	3P	1P	3P	4P	1P	3S	2S	1S	Committee Boat
7	W	Committee Boat	3P	1P	2P	4S	3S	4S	3S	1P	2P	4S	3S	4S	3S		Committee Boat
8	NW	Committee Boat	2P	3P	4P	2S	1S	4S	2P	4P	2P	3P	4P	2S	1S	4S	Committee Boat
Notes:		Course may be shortened at any mark. Finish between committee boat and mark in continuous direction from previous mark. (i.e. you do not have to round finish mark to finish).															
		Shortened Course will be indicated by “S” Flag on committee boat.															



Mark 1	35° 6' 21.9" S	150° 36' 30.5" E
Mark 2	35° 6' 21.9" S	150° 35' 47.4" E
Mark 3	35° 6' 55.0" S	150° 35' 47.4" E
Mark 4	35° 6' 21.9" S	150° 36' 30.5" E

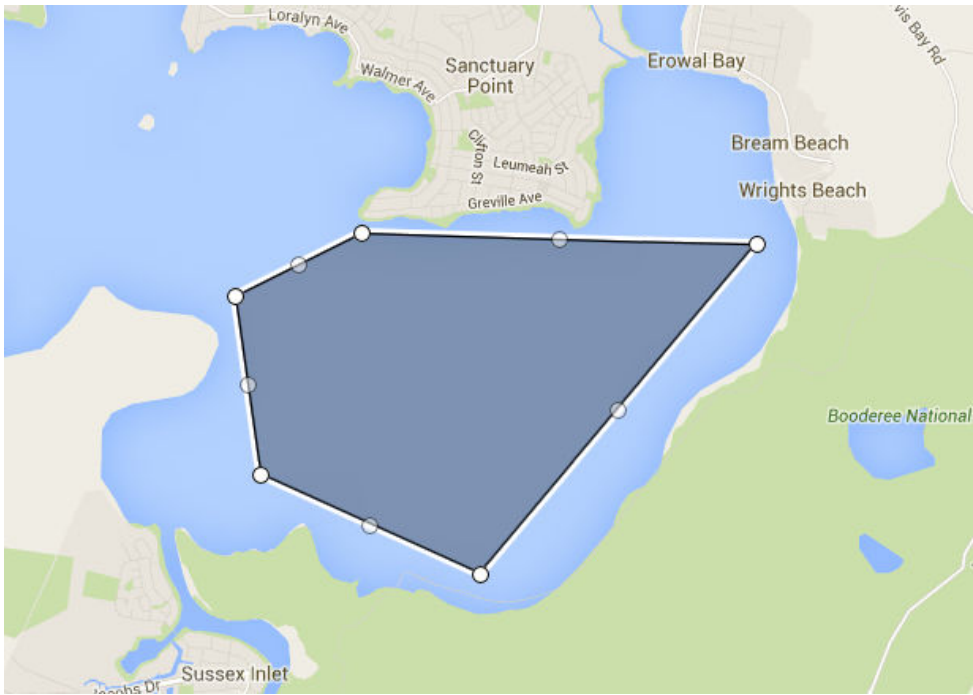
**Weekend Outside Course:**

Standard Triangle-Sausage-Triangle. With either port or starboard rounding's. Rounding to be displayed by flag on committee boat (Green = Starboard, Red = Port). Start from bottom (leeward) mark, finish at top (windward) mark. Start and finish between Committee boat and laid mark of course. Course may be shortened at any mark of the course. Finish between committee boat and mark travelling in direction from last mark. (i.e. you do not have to round the finish mark). Course to be sailed in the general area indicated below according to prevailing wind. Marks to be laid according to the prevailing wind at approximately the positions given in the table below.



Course	Start									Finish
Starboard	1	3S	2S	1S	3S	1S	3S	2S	1S	3
Port	1	3P	2P	1P	3P	1P	3P	2P	1P	3

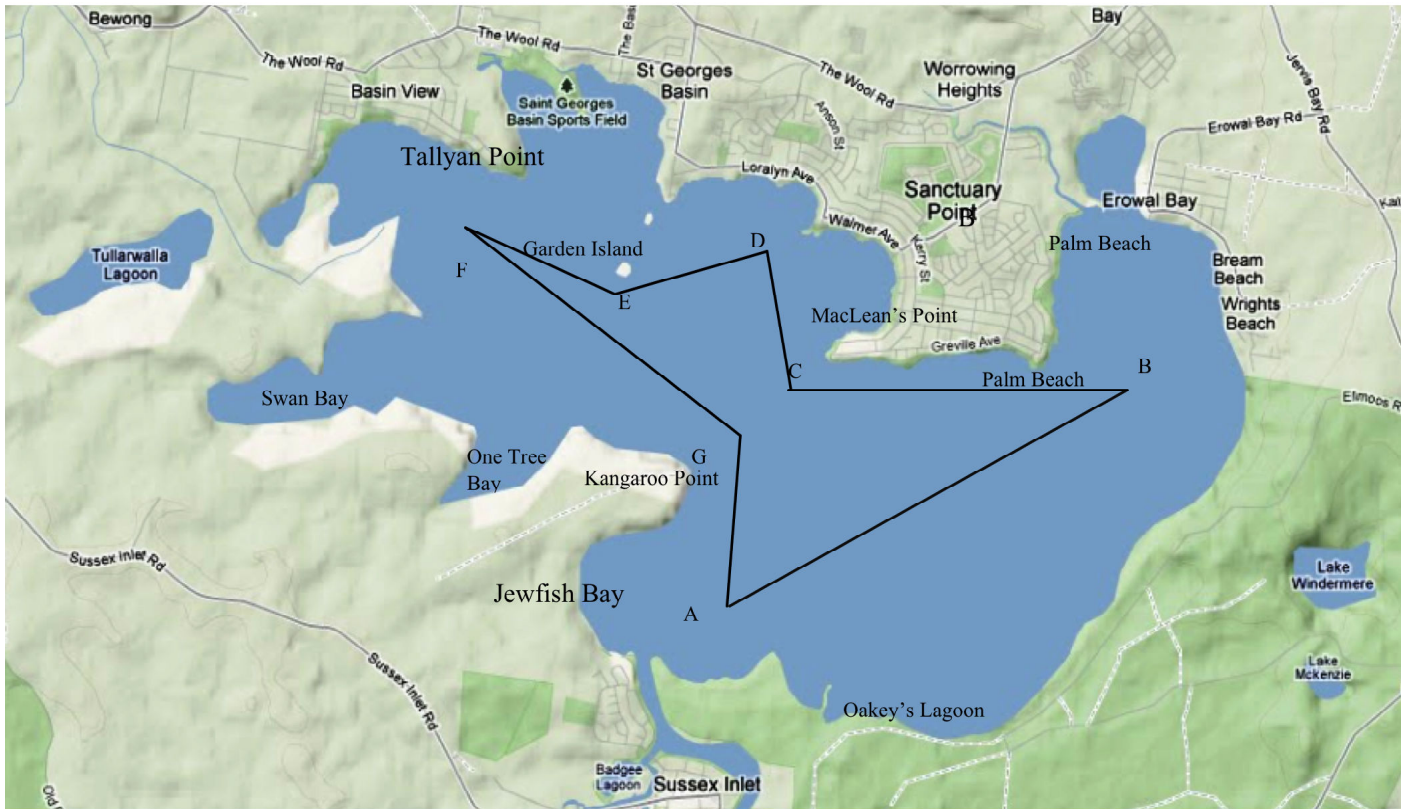
**General Area of Sailing**



## Position of Marks – Outside Course:

Wind Direction	Start	Mark 1/3	Mark 2 (Wing)	Mark 3/1	Finish
N/S	35° 8' 23.1" S 150° 36' 15.9" E	35° 8' 23.1" S 150° 36' 15.9" E	35° 7' 50.5" S 150° 36' 56.2" E	35° 7' 17.9" S 150° 36' 15.9" E	35° 7' 17.9" S 150° 36' 15.9" E
NNE/SSW	35° 8' 25.3" S 150° 36' 23.5" E	35° 8' 25.3" S 150° 36' 23.5" E	35° 8' 9.1" S 150° 37' 14.4" E	35° 7' 26.5" S 150° 36' 53.6" E	35° 7' 26.5" S 150° 36' 53.6" E
NE/SW	35° 7' 29.7" S 150° 37' 15.9" E	35° 7' 29.7" S 150° 37' 15.9" E	35° 8' 17.0" S 150° 37' 15.9" E	35° 8' 17.0" S 150° 36' 16.0" E	35° 8' 17.0" S 150° 36' 16.0" E
ENE/WSW	35° 7' 37.3" S 150° 37' 45.3" E	35° 7' 37.3" S 150° 37' 45.3" E	35° 8' 16.9" S 150° 37' 17.5" E	35° 7' 50.1" S 150° 36' 26.7" E	35° 7' 50.1" S 150° 36' 26.7" E
E/W	35° 7' 52.4" S 150° 37' 38.8" E	35° 7' 52.4" S 150° 37' 38.8" E	35° 8' 11.3" S 150° 37' 13.0" E	35° 7' 52.4" S 150° 36' 31.6" E	35° 7' 52.4" S 150° 36' 31.6" E
ESE/WNW	35° 7' 59.2" S 150° 38' 0" E	35° 7' 59.2" S 150° 38' 0" E	35° 8' 21.0" S 150° 37' 7.1" E	35° 7' 31.8" S 150° 36' 42.1" E	35° 7' 31.8" S 150° 36' 42.1" E
SE/NW	35° 7' 30.5" S 150° 37' 22.2" E	35° 7' 30.5" S 150° 37' 22.2" E	35° 8' 17.1" S 150° 37' 22.2" E	35° 7' 30.5" S 150° 37' 30.1" E	35° 7' 30.5" S 150° 37' 30.1" E
SSE/NNW	35° 8' 22.4" S 150° 36' 36.8" E	35° 8' 22.4" S 150° 36' 36.8" E	35° 7' 39.8" S 150° 37' 0" E	35° 7' 21.2" S 150° 36' 7.3" E	35° 7' 21.2" S 150° 36' 7.3" E
Note: Marks 1 and 3 transpose as indicated depending on prevailing wind.					

## Basin Chase 2018-2019



- A – Laid Mark in the vicinity of Jewfish Bay.
- B – Laid mark, in the vicinity of Erowal Bay (Wrights Beach)
- C – Cardinal Mark off Macleans Point.
- D – Laid Mark, in the vicinity of “Ernies”
- E – Cardinal Mark of Garden Island
- F – Laid Mark off Tallyan Point
- G – Cardinal Mark off Kangaroo Point.

Course 1 (NE)  
Start A, B(p), C, D(p), E, F(p), G, Finish A.

Course 2 (N-NW)  
Start A, G (p), F, E(p), D, C(p), B, Finish A

Course 3 (SE)  
Start D, C(p), B, A, G(p), F, E(p), Finish D

Course 4 (W-SW)  
Start D, E, F(p), G, A(p), B(p), C, Finish D

Once a race has started the marks of the course will not be moved.  
The course may be shortened at any mark of the course. Finish from the direction of the last mark between committee boat and the adjacent mark. Note Finish shortened course finish mark can be a Cardinal mark if required.

## **SIBYC Thursday Race Courses 2018-2019 (v1 02/10/18)**

Courses will comprise 3 marks. Leeward mark (Start mark), Windward Mark and Wing Mark.

Mark A . In the vicinity of Loralyn Ave.

Mark B, in the vicinity of Garden Island.

Mark C, in the vicinity of Macleans Pt.

All courses will be: **Triangle, Triangle, Sausage, Triangle, Triangle, Windward Work to Finish Mark** and will be designated as all Port roundings or all Starboard roundings.

Eg. NE course: Start at Mark B, then A, C, B : A, C, B : A, B : A, C, B : A, C, B : Work to Finish at A.  
(Stbd roundings – Start mark to Port – finish mark to Starboard)

Eg. SE Course: Start at Mark A, then C, B, A : C, B, A : C, A : C, B, A : C, B, A : Work to Finish at C.  
(Port roundings – Start mark to Port – Finish mark to Port).

**SHORTENING OF COURSES:** Shortening of courses will be advised by radio, and will comprise of deleting one or more legs of the course.

**START PROCEDURE :** Refer to the sailing instructions.

A time check will be provided by the start boat.

**FINISH TIMES:** Boats are to note their own finishing time or elapsed time from the nominated start time (based on GPS or cell phone time to the nearest second). Boats shall pass the finishing mark on the side indicated on the course map and within 3 boat lengths of the mark.

The nominated start time is the time indicated for the start by the start boat time check, regardless of whether the gate boat passes the start mark a little late or earlier than expected.

**BASE:** 44 Loralyn Ave St Georges Basin - t: 4443 2333 - Andrew: 0408 977 790.

Loralyn Ave is narrow and dangerous, so we recommend parking in the quiet section as marked on the map and walking back.

