



SUSSEX INLET BASIN
- YACHT CLUB -

Sussex Inlet & Basin

Notice of Season's Events & Sailing Instructions 2020/2021

COMMITTEE

Commodore	Andy Fitzgerald	0402 907 607
Vice Commodore	Lynne Arnold	0408 241 130
Rear Commodore	Steve Miller	0244 460 557
Secretary	Lynne Kirkpatrick	0413 617 083
Treasurer	Louisa Fitzgerald	0409 058 158
Committee Members	Andrew Bonnette Janette MacDonald	0408 977 790
Trustees	Lynne Kirkpatrick Greg Brown	0413 617 083 0422 025 037
Public Officer	Greg Brown	0422 025 037

SAILING COMMITTEE

Weekend

Greg Brown 0422 025 037
Phil Queripel 0418 615 137
Andrew Fitzgerald 0402 907 607
Ken Moloney 0416 281 393
Greg Arnold 0412 927 937

Midweek

Andrew Bonnette 0408 977 790
Greg Brown 0422 025 037

Handicappers/Race

Secretaries

Ken Maloney 0416 281393

Publicity Officer

Louisa Fitzgerald
0409 158 058

The Sussex Inlet-Basin Yacht Club Inc. invites entries from Trailable Yachts, Ballasted Day Sailors and Trailable Multi Hulls for the 2020-2021 season of events to be conducted on St. Georges Basin.

Rules: The races will be governed by the *ISAF Racing Rules of sailing 2017-2020* and the Prescriptions and Special Regulations of the AYF.

Eligibility: All yachts owned by financial members of S.I.B.Y.C. who have paid race entry fees and hold current third party liability insurance of at least \$5 million and SA membership for themselves & participating crew, will be eligible to compete and will gain points in the various Series.

Visitors (Not existing members) are welcome and may sail up to 3 races but will not be awarded points. All visitors must have public liability insurance. Visitors wishing to sail more than three races are invited to join the club. Sailpass offered by SA will be accepted if available

Entries & Fees: To enter, yacht owners must complete the membership/entry form and pay the prescribed fees for the season by the 30th September 2020.

No points will be awarded to boats that are un-financial after 30th September 2020. Points will not be awarded retrospectively for races already sailed once a boat becomes financial.

All entrants agree to be bound by the racing rules of the ISAF and by all other rules that govern the events and:

**“The decision to race places the sole responsibility for deciding whether or not to start or to continue racing on the yacht skipper”
The Committee reserves the right to refuse any entry and need not give any reason for doing so.**

Radio Frequencies: VHF Ch 72 Club Events Note 27Mhz will no longer be used for club events.

VHF Ch 16 Primary distress & calling only.

Measurements: Yachts may be measured and or safety equipment inspections may be conducted at the discretion of the Sailing Committees.

Scoring: The low point system will apply.
Boats which opt to sail in a 6 race series will be scored as an entrant for that series.
Boats which opt to sail 9 randomly selected races over the season will not be scored as an entrant in any series but will be eligible for daily prizes

Program: See Race Calendar – (www.sibyc.com.au/calendar)

WEEKEND EVENTS SUMMARY

Basin Chase Series 6 races (mixed handicap and scratch) 5 to count based on PBH results.
Outside Series 6 races (mixed handicap and scratch) 5 to count based on PBH results.
Inside Series 6 races (mixed handicap and scratch) 5 to count based on PBH results.
Weekend Club Champion 5 races from each series to count based on PBH results
American’s Cup Trophy 7 races to count from the 9 scratch starts based on CBH results.

MIDWEEK EVENTS SUMMARY

Due to falling participation Mid-week races will be social only. Please contact Andrew Bonnette 0408 977 790 on the Tuesday before the scheduled Social day if you wish to participate.

Abandoned races will not be rescheduled.

Trophies: Trophies will be awarded to the successful boats in the above-mentioned events.
The American’s Cup” will be awarded to the weekend CBH Champion (scratch starts).
A prize will be awarded to the winner in each race of the above mentioned events based on PBH results. Boats entered in random series will be eligible for daily prizes but will not be included in series points score.

Duty Boat: A boat, which is entered in a series of races and is rostered to act as the Race Officer/Starter's Committee boat for any race in the series shall be awarded points for equal 4th place in that race or the median point score whichever is lesser.

Representation:

A yacht representing the club at another club's regatta may be eligible points for equal 4th place in that race where the regatta or reasonable travel time falls on the same day as a programmed series race. A request should be submitted in writing to the race committee for consideration

Handicaps:

The time correction factor of handicapping will be used for the Weekend Series

Weekend handicaps and start times will be determined by the Handicapper based on the performance of the previous seasons racing. A boat new to the club will have its PBH determined by the Handicapper and, after the first completed race, its handicap will be adjusted manually or automatically based on performance.

The owner of a boat that has been modified since its last race with the Club must advise the Sailing Committee of the modifications made. The Committee will then decide if there should be any change to its handicap.

During the season a skipper may apply to the Sailing Committee in writing for a review of the boat's handicap based on its performance. The Sailing Committee itself may review and manually adjust handicaps based on a boat's performance. The Handicapper may review all personal handicaps at regular intervals during the season and may take into account the number of boats in the various events and adjust handicaps for any drift of fleet handicaps and recommend any changes to the Sailing Committee. Objection in writing should be addressed to the Sailing Committee for adjudication.

Any modification proposed to be made to a boat's rig or hull or sails during the season must be submitted to the Sailing Committee in advance of the modified boat being sailed in any Club event so that the boat's handicap may be reviewed.

The Timpenny non spinnaker CBH is - 0.675 for club events

For Weekend Series there will be a separate handicap for each of the 3 Series

Weekend Series Divisions: There will be two Divisions for the Weekend Series:

Division 1: Spinnakers optional, will sail the full course (unless there is a shortened course flag shown during the race

Division 2: Non-spinnaker, the courses will be slightly shorter and will not race if the wind speed is expected to exceed 20 knots.

Race Day Organised Post Race socials will be advertised on the club website. Informal postrace gatherings can be organized between competing boats on an ad hoc basis.

Socials:

Two post-race BBQ may be added to the weekend program. Venue and date will be notified on the club website.

Weekend campouts are also held on an ad hoc basis in around the basin. Activities include BBQs sports and fishing comps. Contact Greg Arnold or Greg Brown for further details.



Sailing Instructions 2020-2021

All yachts taking part in Club events do so at their own risk, the Committee and the Sussex Inlet Basin Yacht Club Inc do not accept any responsibility for the sea worthiness of any yacht, or the sufficiency or adequacy of its skipper. **It shall be the sole responsibility of each yacht skipper to decide whether or not to start or to continue to race.** All events run by SIBYC Inc on St Georges Basin are Category 7 under the standards of SI (Cat 7). A self-audit form is available on the club website.

1. Rules and Organising Authority

The season's sailing is organised by the SIBYC and governed by the Racing Rules of Sailing (RRS) for 2017-2020, the prescriptions and special regulations of the AYF, special Regulations, Part 1 the rules of the Trailable Yacht classes and except as any of these are changed by these sailing instructions.

All yachts shall display sail numbers.

For all events the wearing of personal buoyancy at all times whilst racing except when inside the cabin is strongly recommended. It is each Skipper's responsibility to ensure the safety of the boat's crew. Auxiliary engines shall be fitted on their operating brackets whilst racing.

2. Eligibility and Entry

The Club events are open to yachts that have entered and paid fees. Visitors are welcome and may sail up to 3 races but will not be awarded points. Yachts intending to sail in an event shall advise the relevant Race Secretary at least 3 hours before the advertised starting time of their intention to sail (having regard to the weather and the weather forecasts for the day).

All yachts shall indicate their intention to participate in an event by reporting to the Starter/Committee Boat advising the number of persons on board prior to the start time.

Weekend Series - A race may be abandoned unless at least 4 yachts have advised their intention to sail.

3. Notices to Competitors

Midweek Events: Competitors will be notified by e-mail, by telephone, text message or by radio prior to the race start. Information regarding races may also be found on the club website.

Weekend Events: Competitors will be notified by e-mail, the website or SMS. An abandoned race will not be re-sailed.

4. Changes in Sailing Instructions

Weekend Events: Any changes in sailing instructions prior to the start of the race may be signalled from the Race Officer/Starter Boat by displaying of Code Flag 'L'. All boats should come within hail to receive the alterations verbally. These may also be transmitted on VHF Ch 72

5. Schedule of Events

The schedule of events is set out on a separate Calendar. The type of starting is shown on the Calendar. Scheduled starting times for the various events are as follows:

Weekend Events: Scheduled starting time is not before 1300 hours. Competitors wishing to race must indicate their intention to race by 1000 hours on the day of the race. Call or text Ken Maloney on 0416 281 393.

Midweek Events: Scheduled starting time is not before 1300 hours. Competitors wishing to race must indicate their intention to sail and confirm their intention to race as detailed in para 2. Call or text Andrew Bonnette 0408 977 790 or 0422 025 037 Greg Brown

6. Class Flag

The Class Flag is a white flag with a black 'T' for weekend racing. Flags will not be used for mid-week sailing.

7. Racing Area & Courses

Races will be conducted on St Georges Basin on courses as described in Appendix A and B attached. Buoy position may be varied slightly to suit prevailing wind conditions.

Note: The Inside Course and Outside Course will have primary and alternate race areas to allow for strong wind conditions and sea state.

Weekend Basin Chase Events: Course details in Appendix A and the location of the Race Officer/Starter's boat will indicate the start line.

Weekend Inside and Outside Events: Location of the Race Officer/Starter's boat at the starting line will indicate the course to be sailed for outside events. For inside events the starter's boat will be positioned in the centre of the course as shown in Appendix A. The Race Committee (Race Officer & Sailing Committee) will decide the course to be sailed on the day.

Midweek Events: The course to be sailed on the day will be advised by radio. Courses may be varied during the season by the issue of notice to competitors. Course details refer to Appendix B.

9. Marks

Marks will be red or orange buoys. The starting mark will be a red or orange buoy. The finish mark will be a red or orange buoy.

For midweek events, the Garden Island and Macleans Pt cardinal marks may be used as marks of the course. Yachts shall pass within 3 boat lengths of the cardinal marks.

10. Start Procedure – with Start Boat or Shore Start

Races will start in accordance with Rule 26.

Weekend events:

Warning Signal (5 minutes to start) Class flag (white flag with black 'T') & 1 sound signal
Preparatory Signal (4 minutes to start) - Flag 'P' (blue with white centre) & 1 sound signal.

Preparatory Signal (1 minute to start) - Flag 'P' removed & 1 long sound signal.

Starting - Class Flag removed & 1 sound signal.

Scratch Start - All boats will start at the start signal.

Handicap Start – Boats will start at a time equal to the start signal time plus the boat's individual handicap. Each boat's start time will include a sound signal (where possible). The Race Officer/Starter's Boat has the ability to adjust the starting times so that the low handicap boat becomes the scratch boat and the other boats' start times are adjusted accordingly.

Midweek events:

All signals will be made over the radio. No flags will be used.

Refer to Starting Lines section for procedures.

11. Starting Lines

Weekend Start Events:

The starting line will be between the signal mast on the Race Officer/Starter's Boat at the starboard end and the port end mark. An inner distance mark may be laid near the Race Officer/Starter's Boat. When used, yachts shall leave this mark to starboard. A boat shall not start later than 15 minutes after her starting signal. Gate start may be used for other events and will be notified in the sailing program or in accordance with item 4. "Changes in Sailing Instructions."

Midweek Series:

Refer to Appendix B – Midweek Sailing Course Map and Instructions for details.

12. Shortened Course or Abandoning after the Start

Weekend Events:

In accordance with RRS 32.2 the Race committee may shorten course at any mark of the course. Code Flag 'S' will be displayed, and 2 sound signals made. Races may be abandoned before or after the start in accordance with Rule 27.3 or 32.1(a), (b), (c), (d) or (e).

Midweek Events:

Course shortening or abandonment will be advised by radio. Refer to Appendix A course maps for instructions.

13. Recalls

Individual recall will be signaled in accordance with RRS 29. 1. An early starter may also be advised by radio. General recall will be signaled in accordance with RRS 29. 2. Following a general recall the 'I' Flag Rule RRS 30.1 will apply.

14. Finishing line

Weekend Events: This will be between the designated buoy in the course instructions and the flagstaff of the Race Officer/Starter's Boat. If the occasion arises where there is NO Race Officer/Starter's Boat on station at the finish line then all boats must finish by passing the finish buoy on the hand designated and within three boat lengths of the buoy. The boat's crew must record its finish time and if practical, the boat time immediately in front and behind.

Midweek Events: Boats are to note their own finishing time or elapsed time from the nominated start time (based on GPS or cell phone time to the nearest second). Boats shall pass the finishing mark on the side indicated on the course map and within 3 boat lengths of the mark.

15. Time Limit

Each yacht will have 3 hours plus its PBH handicap allowance to sail the course. This allowance is the difference between the fastest boats handicap and the individual boats handicap. If it does not complete the course in this time it will be recorded as DNF.

16. Protests

All protests must be in writing.

Protest Time Limit: An intention to protest must be forwarded either in person or by phone or text to a Race committee member within 3 hours of the last boat finishing advising the details of yacht/s being protested. The formal written protest shall be lodged with a committee member within 24 hours by email or hard copy. A fee of \$5.00 must be paid when the protest is lodged.

Mediation: A mediation hearing may be requested for a protest lodged in accordance with rule 61 which allege an infringement of a rule of Part 2 or 4. Such hearings will be held subsequent to the protest being lodged but do not require the \$5 fee unless a protest hearing is subsequently requested. The time and place of the mediation hearing will be decided by the mediator and such advice may be given verbally. One representative of each boat shall attend the mediation hearing and no witnesses shall be allowed. The mediator shall decide the manner in which testimony is given. After taking testimony at a mediation hearing the mediator shall make one of the following conclusions:

- (a) The protest does not comply with rule 61 and the protestor may withdraw the protest.
 - (b) The matter shall proceed to a protest hearing. (This may be because rules other than Part 2 or 4 are or may be involved, or because evidence is too complex or divergent to reach a reasonable and timely conclusion, or due to the apparent severity of the alleged infringement, or for any other reason decided by the mediator.)
 - (c) No rule was broken and the protestor may withdraw the protest.
 - (d) A rule was broken by one or more of the boats involved, the infringing boat(s) may accept a 20% scoring penalty and if so accepted the protestor shall withdraw the protest. (Part points shall be rounded up and the points of other boats shall not be adjusted.)
- A mediation hearing shall not be re-opened. No conclusion of a mediator shall be subject to appeal or be grounds for redress. Should the protest proceed to a protest hearing then the mediator may be a member of the Protest Committee. Any evidence given by a mediator during a protest hearing shall be given only in the presence of the parties to the hearing.

17. Radio Communication

A boat shall neither make radio transmissions while racing nor receive radio communications not available to all boats. (Radio transmissions on frequencies listed in the notice of race are deemed to be available to all boats). This also applies to the use of mobile phones. See page three for radio frequencies used.

18. Environmental Rule

Yachts shall not dispose of any item on board the boat into St Georges Basin.

19. Wind Speed

Should the wind speed be determined to gust 20 knots or more for Midweek events and 25 knots or more (20 knots for Division 2) for Weekend events during the hour prior to the warning signal the event may, at the discretion of the sailing committee, be either postponed or abandoned by the Sailing Committee/Race Officer. Also if there is less than 3 knots of wind prior to the warning signal the start may, at the discretion of the Sailing Committee, the race may be delayed, postponed or the race abandoned by the Race Officer /Sailing Committee. Also for the Inside and Outside courses, the race may be relocated to the alternate sailing area if it is deemed that the wind is above the permitted limit in the primary sailing area, but potentially below the permitted limit in the alternate sailing area.

20. Use of Motors:

A vessel is permitted to use a motor only to:

1. Help a person or other vessel in danger (redress can be requested in this situation)
2. To prevent grounding or collision during a race. One penalty turn should then be taken in this case, as soon as possible after the event, if recommencing the race.

Appendix A

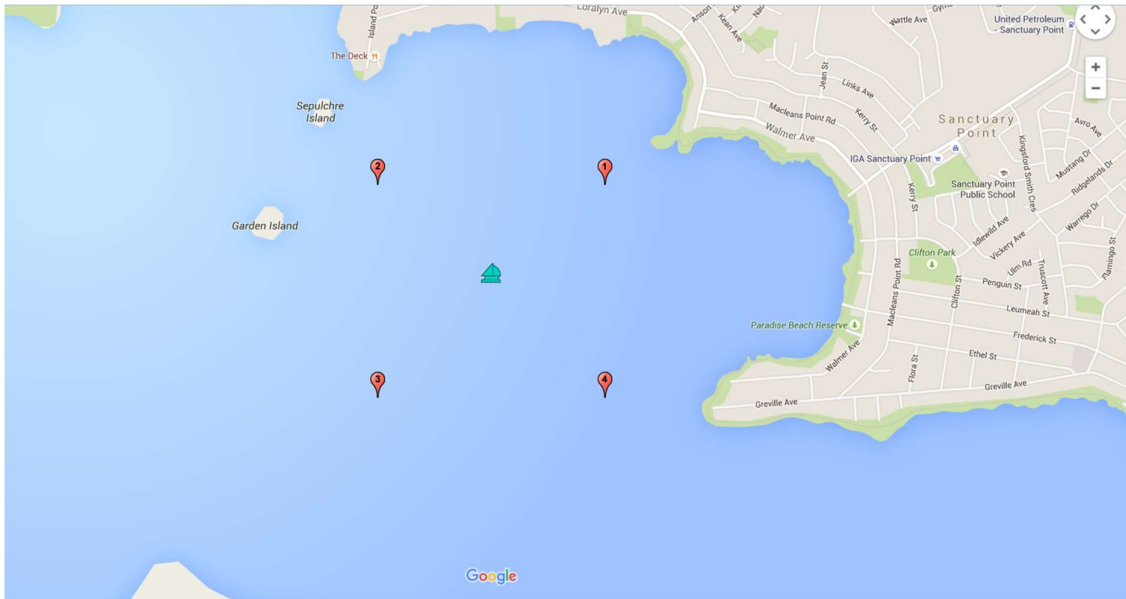
Inside and Outside courses shall have a primary sailing area and an alternate sailing area as indicated below. The Alternate sailing area shall only be used if the sailing committee deem it unlikely that a race can be completed in the primary sailing area.

Weekend Inside Course

2020-2021 Inside Course. Four fixed position laid marks, course based on wind direction.																	
Course No.	Wind Direction	Start	Mark rounding. S = Leave mark to starboard, P = Leave mark to port. Start/Finish will be between committee boat and laid mark in centre of course.													Finish	
1	N	Committee Boat	2P	4P	1P	3S	2S	3S	2S	4P	1P	3S	2S	3S	2S	Committee Boat	
2	NE	Committee Boat	1P	2P	3P	1S	4S	3S	1P	3P	1P	2P	3P	1S	4S	3S	Committee Boat
3	E	Committee Boat	1P	3P	4P	2S	1S	2S	1S	3P	4P	2S	1S	2S	1S	Committee Boat	
4	SE	Committee Boat	4P	1P	2P	4S	3S	2S	4P	2P	4P	1P	2P	4S	3S	2S	Committee Boat
5	S	Committee Boat	4P	2P	3P	1S	4S	1S	4S	2P	3P	1S	4S	1S	4S	Committee Boat	
6	SW	Committee Boat	3P	4P	1P	3S	2S	1S	3P	1P	3P	4P	1P	3S	2S	1S	Committee Boat
7	W	Committee Boat	3P	1P	2P	4S	3S	4S	3S	1P	2P	4S	3S	4S	3S	Committee Boat	
8	NW	Committee Boat	2P	3P	4P	2S	1S	4S	2P	4P	2P	3P	4P	2S	1S	4S	Committee Boat
Notes:		Course may be shortened at any mark. Finish between committee boat and mark in continuous direction from previous mark. (i.e. you do not have to round finish mark to finish).															
		Shortened Course will be indicated by "S" Flag on committee boat.															

Division 2: Omit the marks highlighted in yellow.

Primary Sailing Area



Mark 1	35° 6' 21.9" S	150° 36' 30.5" E
Mark 2	35° 6' 21.9" S	150° 35' 47.4" E
Mark 3	35° 6' 55.0" S	150° 35' 47.4" E
Mark 4	35° 6' 21.9" S	150° 36' 30.5" E

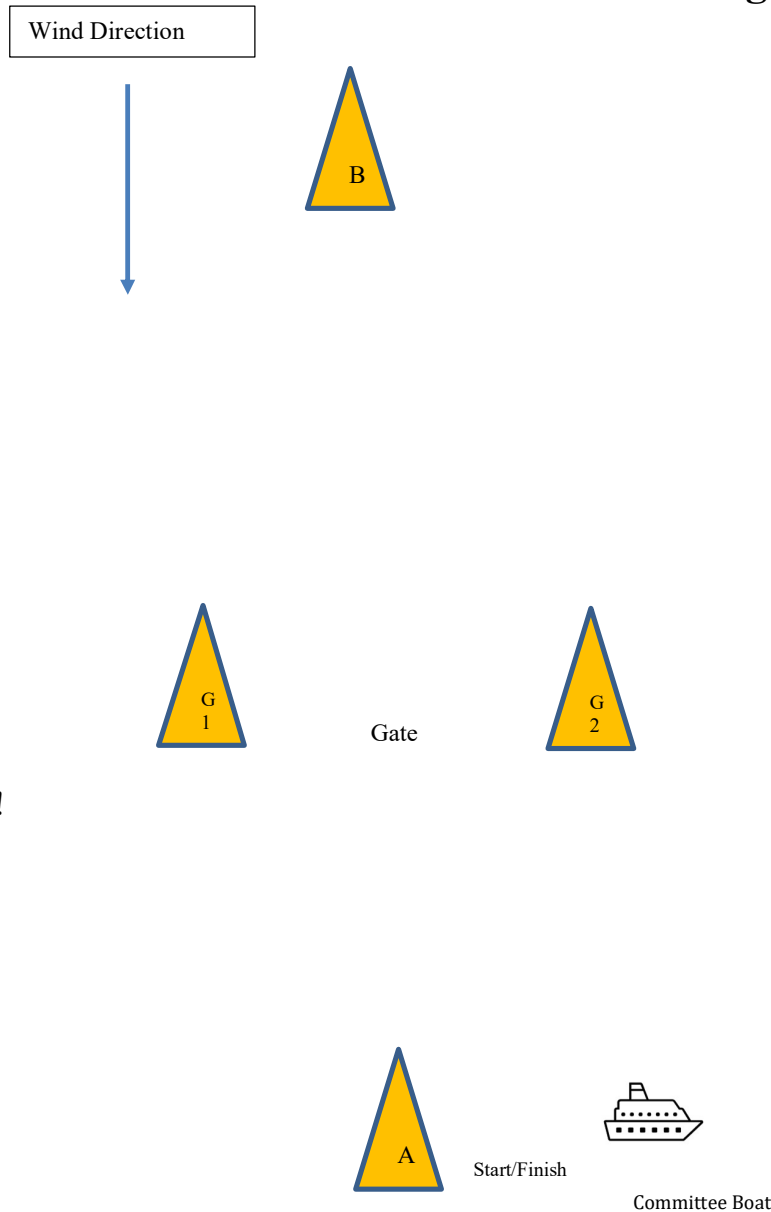
Alternate Sailing Area:

At the discretion of the sailing committee, the sailing area for the Inside course may be moved to an area South of Kangaroo point, in the approximate location of Jewfish Bay. The course to be sailed will be the same as above. The approximate locations of the 4 buoys will be as below:

Mark 1	35° 7' 50.0" S	150° 37' 0.0" E
Mark 2	35° 7' 33.0" S	150° 36' 27.0" E
Mark 3	35° 8' 01.0" S	150° 35' 57.0" E
Mark 4	35° 8' 16.0" S	150° 36' 33.0" E

Outside Course 2020

Windward/Leeward with center gate.



Not to Scale!

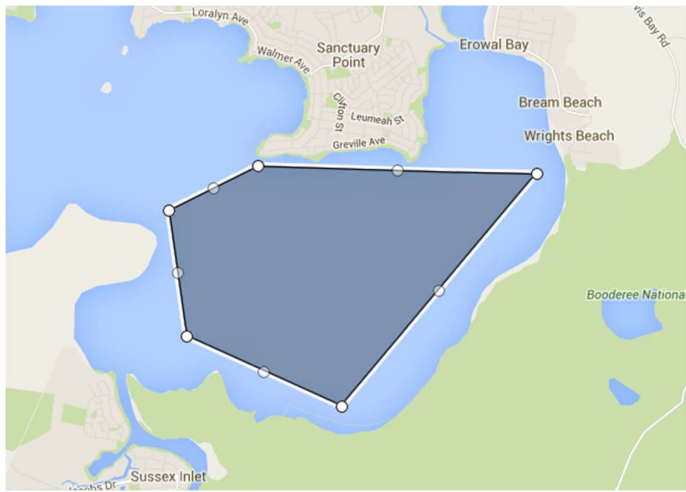
Course: Port Roundings except Gate.

Division 1 - Start, B,A,B,Gate,B,A,Gate,A,B,Finish at A

Division 2 – Start, B,A,B,Gate,B,A,Gate, Finish at A

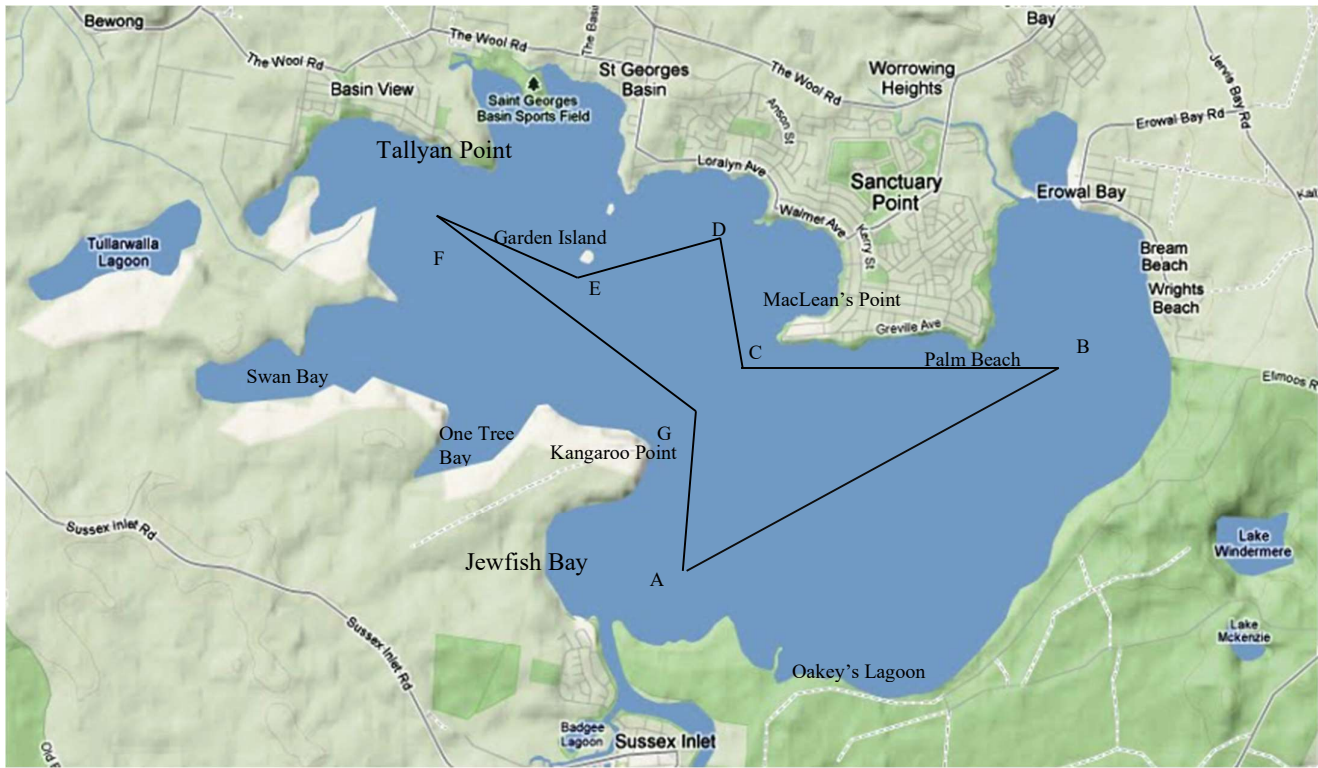
Gate Mark – Pass through gate and round either mark G1 or G2. The gate does not form a mark of the course except where indicated and may be passed through at any other time.

Outside Course - Primary General Area of Sailing



Alternate Sailing Area: To the west of a line between Kangaroo and Macleans Point according to the prevailing wind conditions.

Basin Chase 2020-2021



- A – Laid Mark in the vicinity of Jewfish Bay.
- B – Laid mark, in the vicinity of Erowal Bay (Wrights Beach)
- C – Cardinal Mark off Macleans Point.
- D – Laid Mark, in the vicinity of “Ernie’s”
- E – Cardinal Mark of Garden Island
- F – Laid Mark off Tallyan Point
- G – Cardinal Mark off Kangaroo Point.

Course 1 (NE)

Division 1: Start A, B(p), C, D(p), E, F(p), G, Finish A.

Division 2: Start A, B(p), C, D(p), G, Finish A

Course 2 (N-NW)

Division 1: Start A, G (p), F, E(p), D, C(p), B, Finish A

Division 2: Start A, G (p), D, C(p), B, Finish A

Course 3 (SE)

Division 1: Start D, C(p), B, A, G(p), F, E(p), Finish D

Division 2: Start D, C(p), B, A, G(p), Finish D

Course 4 (W-SW)

Division 1: Start D, E, F(p), G, A(p), B(p), C, Finish D

Division 2: Start D, G, A(p), B(p), C, Finish D

Once a race has started the marks of the course will not be moved.
The course may be shortened at any mark of the course. Finish from the direction of the last mark between committee boat and the adjacent mark. Note Finish shortened course finish mark can be a Cardinal mark if required.

Appendix B

SIBYC Thursday Social Sailing Courses 2020-2021 (v2 27/06/19)

Courses will comprise 3 mark locations.

Mark 1. A club laid mark (red/orange) in the vicinity of Loralyn Ave. (Location variable between Island Point and Paradise Beach)

Mark 2. The Cardinal Mark in the vicinity of Macleans Point. Boats are to round an imaginary mark within 3 boat lengths of the Cardinal Mark (deep water side).

Mark 3. The Cardinal Mark in the vicinity of Garden Island. Boats are to round an imaginary mark within 3 boat lengths of the Cardinal Mark (deep water side).

All courses will be: Triangle, Triangle, Triangle, Triangle, and will be designated as all Port roundings or all Starboard roundings.

A time check will be provided by the designated START boat by radio. Generally this will be at 10 minutes before start time. Starts may be delayed to allow participants time to arrive.

Course A: All Starboard roundings – Start mark to Starboard – Finish mark to Starboard.
Start at Mark 1, then 2, 3, 1 : 2, 3, 1 : 2, 3, 1 : 2, 3 and finish at 1.

Course B: All Port roundings – Start mark to Port – Finish mark to Port).
Start at Mark 1, then 3, 2, 1 : 3, 2, 1 : 3, 2, 1 : 3, 2 and finish at 1.

SHORTENING OF COURSES: Shortening of courses will be advised by radio, and will comprise deleting one or more legs of the course.

START PROCEDURE : At or after the nominated start time, all boats are to sail past Mark 1 (within 5 boat lengths) passing the mark as indicated by the course.

BASE: After race afternoon tea (BYO alcohol if you like) and social chit chat at 44 Loralyn Ave St Georges Basin - Andrew: 0408 977 790. NOTE – Loralyn Ave is narrow and dangerous, so we recommend parking in the quiet section as marked on the map and walking back.

