



SUSSEX INLET BASIN  
- YACHT CLUB -

# Sussex Inlet & Basin Yacht Club Inc.

## Notice of Season's Events & Sailing Instructions 2023/2024

### COMMITTEE

Commodore	Greg Arnold	0412 927 937
Vice Commodore	Lynne Arnold	0408 241 130
Rear Commodore	Steve Miller	0244 460 557
Secretary	Lynne Kirkpatrick	0413 617 083
Treasurer	Louisa Fitzgerald	0409 058 158
Committee Members	Janette MacDonald	
Trustees	Lynne Kirkpatrick Greg Brown	0413 617 083 0422 025 037
Public Officer	Greg Brown	0422 025 037

## **SAILING COMMITTEE**

### **Weekend**

Greg Brown	0422 025 037
Andy Fitzgerald	0402 907 607
Ken Moloney	0416 281 393
Greg Arnold	0412 927 937

### **Social Sailing**

Greg Brown	0422 025 037
Andy Fitzgerald	0402 907 607

### **Handicappers/Race Secretaries**

Andy Fitzgerald	0402 907 607
-----------------	--------------

### **Publicity Officer**

Louisa Fitzgerald	0409 158 058
-------------------	--------------

The Sussex Inlet-Basin Yacht Club Inc. invites entries from Trailable Yachts, Ballasted Day Sailors and Trailable Multi Hulls for the 2023-2024 season of events to be conducted on St. Georges Basin.

**Rules:** The races will be governed by the *ISAF Racing Rules of sailing 2021-2024* and the Prescriptions and Special Regulations of the Australian Sailing (AS).

**Eligibility:** All yachts owned by financial members of S.I.B.Y.C. and hold current third-party liability insurance of at least \$5 million and AS membership for themselves & participating crew, will be eligible to compete and will gain points in the various Series. Membership of SIBYC includes AS membership. **Visitors** (Not existing members) are welcome and may sail up to 6 races but will not be awarded points. All visitors must have public liability insurance. Visitors will be required to complete a AS sailpass available via the club website. Sailpass will give the applicant temporary membership of AS. Each member of the crew must complete a sailpass for each race they wish to compete in.

**Entries & Fees:** to enter, yacht owners must complete the membership/entry form and pay the prescribed fees for the season by the 30<sup>th</sup> October 2023.

**No points will be awarded to boats that are un-financial after 30<sup>th</sup> October 2023. Points will not be awarded retrospectively for races already sailed once a boat becomes financial.**

All entrants agree to be bound by the racing rules of the ISAF and by all other rules that govern the events and:

**“The decision to race places the sole responsibility for deciding whether or not to start or to continue racing on the yacht skipper”  
The Committee reserves the right to refuse any entry and need not give any reason for doing so.**

**Radio Frequencies:** VHF Ch 72 Club Events.

VHF Ch 16 Primary distress & calling only.

**Measurements:** Yachts may be measured and or safety equipment inspections may be conducted at the discretion of the Sailing Committees.

**Scoring:** The low point system will apply.  
Boats which opt to sail in a 6 race series will be scored as an entrant for that series.  
Boats which opt to sail 9 randomly selected races over the season will not be scored as an entrant in any series but will be eligible for daily prizes.

**Program:** See Race Calendar – ([www.sibyc.com.au/calendar](http://www.sibyc.com.au/calendar))

## **WEEKEND EVENTS SUMMARY**

**Basin Chase Series** 6 races (mixed handicap and scratch) 5 to count based on PBH results.

**Hybrid Series** 6 races (mixed handicap and scratch) 5 to count based on PBH results.

**Weekend Club Champion** 5 races from each series to count based on PBH results.

**American’s Cup Trophy** 5 races to count from the 6 scratch starts based on CBH results.

## **Social Sailing and Events**

Social sailing (non-race) may occur on Saturday/Sundays as indicated in the calendar and at various other times during the season. Information will be posted on the website and via social media.

Financial members of the club can participate in a social sailing event. But insurance and sailpass will be required if not a club member.

**Abandoned races may be rescheduled as per the calendar.**

The Committee will decide if and when cancelled races are re-run as required. Information will be posted on the website and social media.

**Trophies:** Trophies will be awarded to the successful boats in the above-mentioned events.  
The American's Cup" will be awarded to the weekend CBH Champion (scratch starts).  
The Commodores Cup will be awarded at the discretion of the club Commodore to any boat operated by a member of the club, whether or not they have completed in a race for that season. The criteria for the award of the cup are at the discretion of the Commodore.  
A prize will be awarded to the winner in each race of the above-mentioned events based on PBH results. Boats entered in random series will be eligible for daily prizes but will not be included in series points score.

**Duty Boat:** A boat, which is entered in a series of races and is rostered to act as the Race Officer/Starter's Committee boat for any race in the series shall be awarded points for equal 4<sup>th</sup> place in that race or the median point score whichever is lesser.

**Representation:** A yacht representing the club at another club's regatta may be eligible points for equal 4<sup>th</sup> place in that race where the regatta or reasonable travel time falls on the same day as a programmed series race. A request should be submitted in writing to the race committee for consideration.

**Handicaps:** The time correction factor of handicapping will be used for the Weekend Series  
  
Weekend handicaps and start times will be determined by the Handicapper based on the performance of the previous seasons racing. A boat new to the club will have its PBH determined by the Handicapper, and after the first completed race, its handicap will be adjusted manually or automatically based on performance.

The owner of a boat that has been modified since its last race with the Club must advise the Sailing Committee of the modifications made. The Committee will then decide if there should be any change to its handicap.

During the season a skipper may apply to the Sailing Committee in writing for a review of the boat's handicap based on its performance. The Sailing Committee itself may review and manually adjust handicaps based on a

boat's performance. The Handicapper may review all personal handicaps at regular intervals during the season and may take into account the number of boats in the various events and adjust handicaps for any drift of fleet handicaps and recommend any changes to the Sailing Committee. Objection in writing should be addressed to the Sailing Committee for adjudication.

Any modification proposed to be made to a boat's rig or hull or sails during the season must be submitted to the Sailing Committee in advance of the modified boat being sailed in any Club event so that the boat's handicap may be reviewed.

The Timpenny non spinnaker CBH is - 0.675 for club events

**For Weekend Series there will be a single rolling handicap for all of the 2 Series. I.e., the handicaps for each boat will be adjusted after each race and applied to the next race, even if it is a different series.**

All boats will race in a single division. A boat entered into a series must declare if it wishes to use a spinnaker before the first race of the series. If the boat does not wish to use a spinnaker, its handicap will be adjusted accordingly, but such boats must not use a spinnaker for the duration of the series. If they decide that they want to use a spinnaker later in the series, then no points may be awarded.

**Race Day** Organized Post Race socials will be advertised on the club website. Informal postrace gatherings can be organized between competing boats on an ad hoc basis.

**Socials:**

Social gatherings will be organized throughout the season and will be advertised on the website and social media.

Weekend campouts are also held on an ad hoc basis in around the basin. Activities include BBQs sports and fishing comps. Contact Greg Arnold or Greg Brown for further details.



## Sailing Instructions 2023-2024

All yachts taking part in Club events do so at their own risk, the Committee and the Sussex Inlet Basin Yacht Club Inc do not accept any responsibility for the sea worthiness of any yacht, or the sufficiency or adequacy of its skipper. **It shall be the sole responsibility of each yacht skipper to decide whether or not to start or to continue to race.** All events run by SIBYC Inc on St Georges Basin are Category 7 under the standards of AS (Cat 7). A self-audit form is available on the club website.

### 1. Rules and Organizing Authority

The season's sailing is organized by the SIBYC and governed by the Racing Rules of Sailing (RRS) for 2021-2024, the prescriptions and special regulations of the Sailing Australia, special Regulations, Part 1 the rules of the Trailable Yacht classes and except as any of these are changed by these sailing instructions.

All yachts shall display sail numbers.

For all events the wearing of personal buoyancy at all times whilst racing except when inside the cabin is strongly recommended. It is each Skipper's responsibility to ensure the safety of the boat's crew. Auxiliary engines shall be fitted on their operating brackets whilst racing.

### 2. Eligibility and Entry

The Club events are open to yachts that have entered and paid fees. Visitors are welcome and may sail up to 6 races but will not be awarded points. Yachts intending to sail in an event shall advise the relevant Race Secretary at least 3 hours before the advertised starting time of their intention to sail (having regard to the weather and the weather forecasts for the day).

All yachts shall indicate their intention to participate in an event by reporting to the Starter/Committee Boat advising the number of persons on board prior to the start time.

**Weekend Series** - A race may be abandoned unless at least 3 yachts have advised their intention to sail.

### 3. Notices to Competitors

**Weekend Events:** Competitors will be notified by e-mail, the website or SMS. An abandoned race may be resailed as per dates indicated in the events calendar.

#### **4. Changes in Sailing Instructions**

**Weekend Events:** Any changes in sailing instructions prior to the start of the race may be signaled from the Race Officer/Starter Boat by displaying of Code Flag 'L'. All boats should come within hail to receive the alterations verbally. These may also be transmitted on VHF Ch 72

#### **5. Schedule of Events**

The schedule of events is set out on a separate Calendar. The type of starting is shown on the Calendar. Scheduled starting times for the various events are as follows:

**Weekend Events:** Scheduled starting time is not before 1200 hours. Competitors wishing to race must indicate their intention to race by 1000 hours on the day of the race. Call or text Andy Fitzgerald on 0402 907 607.

#### **6. Class Flag**

The Class Flag is a white flag with a black 'T' for weekend racing.

#### **7. Racing Area & Courses**

Races will be conducted on St Georges Basin on courses as described in Appendix A. Buoy position may be varied slightly to suit prevailing wind conditions.

Note: The Hybrid Series may be sailed in area of the Basin depending on wind and prevailing sea conditions.

**Weekend Basin Chase Events:** Course details in Appendix A and the location of the Race Officer/Starter's boat will indicate the start line.

**Weekend Hybrid Series:** Location of the Race Officer/Starter's boat at the starting line will indicate the course to be sailed for outside events.

The Race Committee (Race Officer & Sailing Committee) will decide the course to be sailed on the day.

#### **9. Marks**

Marks will be red or orange buoys. The starting mark will be a red or orange buoy. The finish mark will be a red or orange buoy.

#### **10. Start Procedure – with Start Boat or Shore Start**

Races will start in accordance with Rule 26.

##### **Weekend events:**

Warning Signal (5 minutes to start) Class flag (white flag with black 'T') & 1 sound signal  
Preparatory Signal (4 minutes to start) - Flag 'P' (blue with white center) & 1 sound signal.

Preparatory Signal (1 minute to start) - Flag 'P' removed & 1 long sound signal.

Starting - Class Flag removed & 1 sound signal.

**Scratch Start** - All boats will start at the start signal.

**Handicap Start** – Boats will start at a time equal to the start signal time plus the boat's individual handicap. Each boat's start time will include a sound signal (where possible).

The Race Officer/Starter's Boat has the ability to adjust the starting times so that the low handicap boat becomes the scratch boat and the other boats' start times are adjusted accordingly.

### **10.1 Start Procedure – No Start/Committee Boat.**

**Scratch Starts:** The Gate Start System shall be used. The designated start yacht will drop a start buoy for the port end of the start line at least 5 minutes before the scheduled start time. The start yacht will then approach the port end start buoy as close as practical to the start time and then sail away from the buoy on a close-hauled port tack. On passing the buoy the start yacht **MAY** also make a sound signal or flag signal to indicate the start of the race. The start yacht will then continue to sail for a minimum of 1 minute on port tack. Other yachts must then pass between the stern of the start yacht and the port starting buoy. After one minute the start yacht may tack to starboard or continue on port. The start yacht **MAY** make a signal by sound or flag to indicate gate start has finished. Yachts arriving to start after the 1-minute gate time are advised to start within three boat lengths of the start mark.

**Handicap Starts:** The designated Start Yacht shall be the highest handicap start time boat. The Start Yacht shall lay the port end start buoy and then position themselves on anchor at the starboard end of the line. They will signal start time for race and start time for each boat, by one or more of the following signals: Flag Signal, Audible Signal (horn), Radio Signal. When the last yacht before the Start Yacht has been started, then the duty start yacht may up anchor and start at their own designated time, within 3 boats lengths of the port start buoy. If there is insufficient time between the second last boat and start boat to allow a safe and reasonable start, then redress shall be given by way of finish time correction.

## **11. Starting Lines**

### ***Weekend Start Events – Committee Boat on Duty.***

The starting line will be between the signal mast on the Race Officer/Starter's Boat at the starboard end and the port end mark. An inner distance mark may be laid near the Race Officer/Starter's Boat. When used, yachts shall leave this mark to starboard. A boat shall not start later than 15 minutes after her starting signal.

### ***Weekend Start Events – No Committee Boat on Duty.***

**Scratch Gate Start** – The Start Line shall be between the port start buoy and the stern of the gate start boat for up to 1 minute from when the gate start boat passes the port end start buoy.

**Handicap Start** – The start line shall be between the port end start buoy and the stern of the start boat.

## **12. Shortened Course or Abandoning after the Start**



### ***Weekend Events Race Committee Boat on Duty:***

In accordance with RRS 32.2 the Race committee may shorten the course at any mark of the course. Code Flag 'S' will be displayed, and 2 sound signals made. Races may be abandoned before or after the start in accordance with Rule 27.3 or 32.1(a), (b), (c), (d) or (e).

### ***Weekend Events Race Committee NO Start Boat on Duty:***

Radio Communication will be made via Ch72 VHF. On water sailing committee members will discuss and advise if shortened course is required. If yes, then announcement will be made over the radio. All vessels to finish within 3 boat lengths of designated shortened finish mark from the usual direction of travel and record their own finish time.

## **13. Recalls**

Individual recall will be signaled in accordance with RRS 29. 1. An early starter may also be advised by radio. General recall will be signaled in accordance with RRS 29. 2. Following a general recall the 'T' Flag Rule RRS 30.1 will apply.

## **14. Finishing line**

***Weekend Events:*** This will be between the designated buoy in the course instructions and the flagstaff of the Race Officer/Starter's Boat. If the occasion arises where there is NO Race Officer/Starter's Boat on station at the finish line, then all boats must finish by passing the finish buoy on the hand designated and within three boat lengths of the buoy. The boat's crew must record its finish time and if practical, the boat time immediately in front and behind.

## **15. Time Limit**

Each yacht will have 3 hours plus its PBH handicap allowance to sail the course. This allowance is the difference between the fastest boats handicap and the individual boats handicap. If it does not complete the course in this time, it will be recorded as DNF.

## **16. Protests**

All protests must be in writing.

***Protest Time Limit:*** An intention to protest must be forwarded either in person or by phone or text to a Race committee member within 3 hours of the last boat finishing advising the details of yacht/s being protested. The formal written protest shall be lodged with a committee member within 24 hours by email or hard copy. A fee of \$5.00 must be paid when the protest is lodged.

***Mediation:*** A mediation hearing may be requested for a protest lodged in accordance with rule 61 which alleges an infringement of a rule of Part 2 or 4. Such hearings will be held subsequent to the protest being lodged but do not require the \$5 fee unless a protest hearing is subsequently requested. The time and place of the mediation hearing

will be decided by the mediator and such advice may be given verbally. One representative of each boat shall attend the mediation hearing and no witnesses shall be allowed. The mediator shall decide the manner in which testimony is given. After taking testimony at a mediation hearing the mediator shall make one of the following conclusions:

(a) The protest does not comply with rule 61 and the protestor may withdraw the protest.

(b) The matter shall proceed to a protest hearing. (This may be because rules other than Part 2 or 4 are or may be involved, or because evidence is too complex or divergent to reach a reasonable and timely conclusion, or due to the apparent severity of the alleged infringement, or for any other reason decided by the mediator.)

(c) No rule was broken, and the protestor may withdraw the protest.

(d) A rule was broken by one or more of the boats involved, the infringing boat(s) may accept a 20% scoring penalty and if so accepted the protestor shall withdraw the protest. (Part points shall be rounded up and the points of other boats shall not be adjusted.)

A mediation hearing shall not be re-opened. No conclusion of a mediator shall be subject to appeal or be grounds for redress. Should the protest proceed to a protest hearing then the mediator may be a member of the Protest Committee. Any evidence given by a mediator during a protest hearing shall be given only in the presence of the parties to the hearing.

## **17. Radio Communication**

A boat shall neither make radio transmissions while racing nor receive radio communications not available to all boats. (Radio transmissions on frequencies listed in the notice of race are deemed to be available to all boats). This also applies to the use of mobile phones. See page three for radio frequencies used.

## **18. Environmental Rule**

Yachts shall not dispose of any item on board the boat into St Georges Basin.

## **19. Wind Speed**

Should the wind speed be determined to gust 25 knots or more for Weekend events during the hour prior to the warning signal the event may, at the discretion of the sailing committee, be either postponed or abandoned by the Sailing Committee/Race Officer. Also, if there is less than 3 knots of wind prior to the warning signal the start may, at the discretion of the Sailing Committee, the race may be delayed, postponed or the race abandoned by the Race Officer /Sailing Committee. Also, for the Hybrid series courses, the race may be relocated to the alternate sailing area if it is deemed that the wind is above the permitted limit in the primary sailing area, but potentially below the permitted limit in the alternate sailing area.

## 20. Use of Motors:

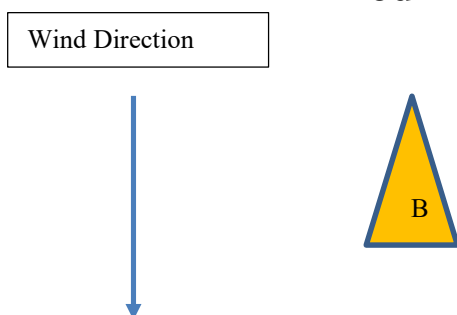
**Whilst racing:** A vessel is permitted to use a motor only to:

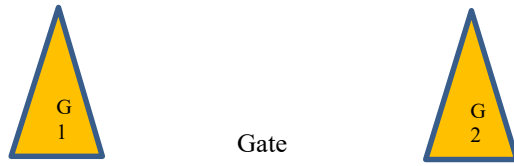
1. Help a person or other vessel in danger (redress can be requested in this situation)
2. To prevent grounding or collision during a race. One penalty turn should then be taken in this case, as soon as possible after the event, if recommencing the race.

## Appendix A

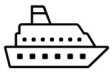
Hybrid Series course may be sailed in area of the basin suitable for safe navigation and subject to the prevailing wind of the day.

### Hybrid Series 2023-2024 Windward/Leeward with center gate. “Red Bull Course”





Not to Scale!



Start/Finish

Committee Boat

Course: Port Rounding's except Gate.

Start, B,A,B,Gate,B,A,Gate,A,B,Finish at A

Gate Mark – Pass through gate and round either mark G1 or G2. The gate does not form a mark of the course except where indicated and may be passed through at any other time.

## Hybrid Series 2023-2024 Triangle Course

Standard Triangle-Sausage-Triangle. With either port or starboard rounding's. Rounding to be displayed by flag on committee boat (Green = Starboard, Red = Port). Start from bottom (leeward) mark, finish at top (windward) mark. Start and finish between Committee boat and laid mark of course. Course may be shortened at any mark of the course. Finish between committee boat and mark travelling in direction from last mark. (i.e., you do not have to round the finish mark). Course to be sailed in the general area indicated below according to prevailing wind. Marks to be laid according to the prevailing wind at approximately the positions given in the table below.

Starboard Rounding

Port Rounding

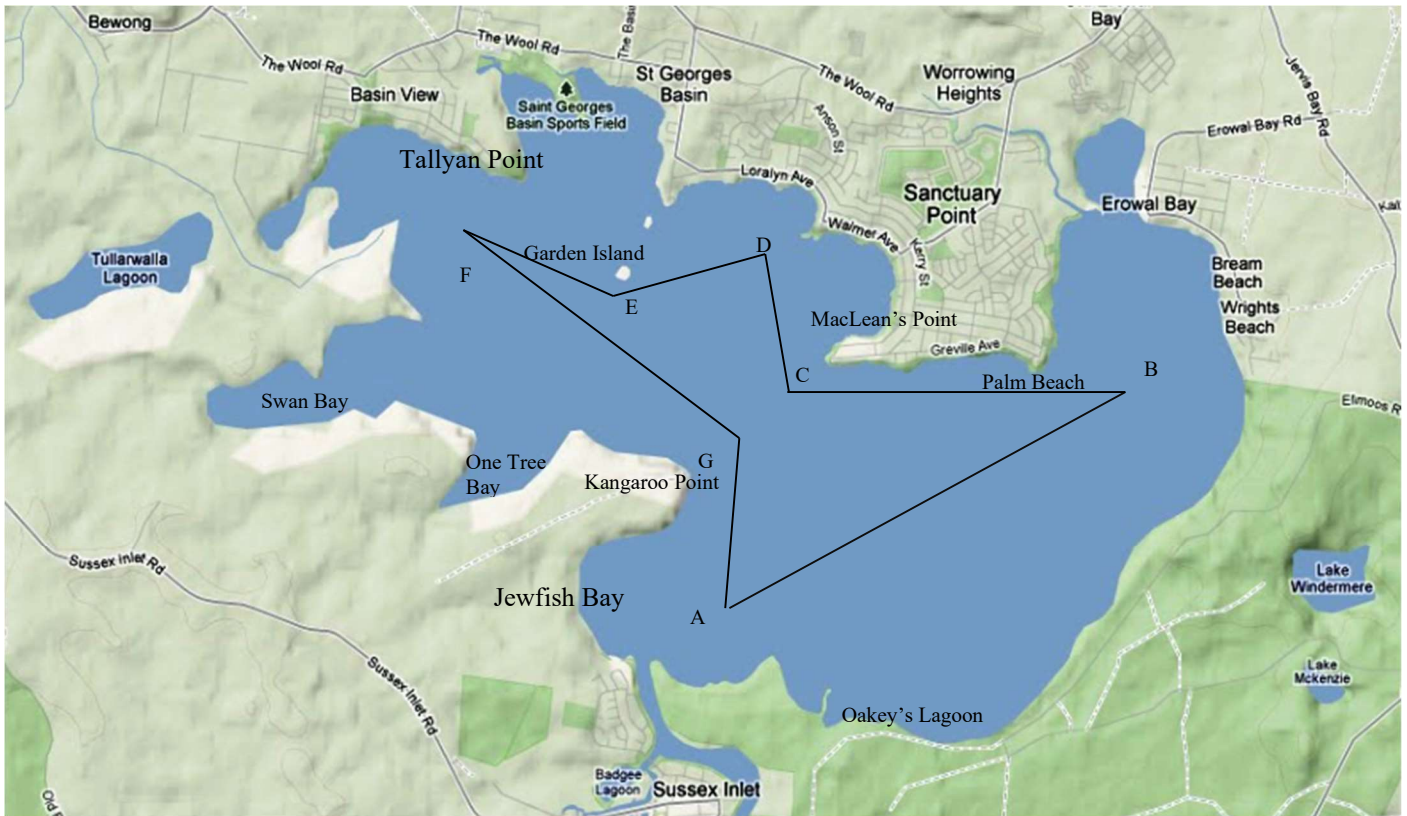


Prevailing wind.



Course	Start									Finish
Starboard	1	3S	2S	1S	3S	1S	3S	2S	1S	3
Port	1	3P	2P	1P	3P	1P	3P	2P	1P	3

**Basin Chase 2023-2024**



A – Laid Mark in the vicinity of Jewfish Bay.

- B – Laid mark, in the vicinity of Erowal Bay (Wrights Beach)
- C – Cardinal Mark off Macleans Point.
- D – Laid Mark, in the vicinity of “Ernies”
- E – Cardinal Mark of Garden Island
- F – Laid Mark off Tallyan Point
- G – Cardinal Mark off Kangaroo Point.

**Course 1 (NE)**

Division 1: Start A, B(p), C, D(p), E, F(p), G, Finish A.

**Course 2 (N-NW)**

Division 1: Start A, G (p), F, E(p), D, C(p), B, Finish A

**Course 3 (SE)**

Division 1: Start D, C(p), B, A, G(p), F, E(p), Finish D

**Course 4 (W-SW)**

Division 1: Start D, E, F(p), G, A(p), B(p), C, Finish D

Once a race has started the marks of the course will not be moved.

The course may be shortened at any mark of the course. Finish from the direction of the last mark between committee boat and the adjacent mark. Note Finish shortened course finish mark can be a Cardinal mark if required. If no committee boat on duty, finish within 3 boats lengths of the final mark.